

**OTHER AGENCIES  
SUMMARY**

	<u>Page #</u>	<u>Appropriation</u>	<u>Departmental Revenue</u>	<u>Fund Balance</u>
<b><u>OTHER AGENCIES</u></b>				
IN-HOME SUPPORTIVE SERVICES PUBLIC AUTHORITY	2	5,946,812	4,594,266	1,352,546
ECONOMIC AND COMMUNITY DEVELOPMENT CORP	3	368	-	368
COUNTY INDUSTRIAL DEVELOPMENT AUTHORITY (COIDA)	5	37,996	1,000	36,996
REDEVELOPMENT AGENCY SUMMARY				
SPEEDWAY PROJECT AREA	7	19,771,335	9,036,091	10,735,244
CEDAR GLEN PROJECT AREA	11	10,404,156	836,460	9,567,696
VICTOR VALLEY - EDA PROJECT AREA	13	1,400,576	256,105	1,144,471
MISSION BLVD JOINT PROJECT AREA	14	149,843	24,570	125,273
PROPOSED BLOOMINGTON PROJECT AREA	17	-	-	-
PROPOSED CAJON PROJECT AREA	19	-	-	-

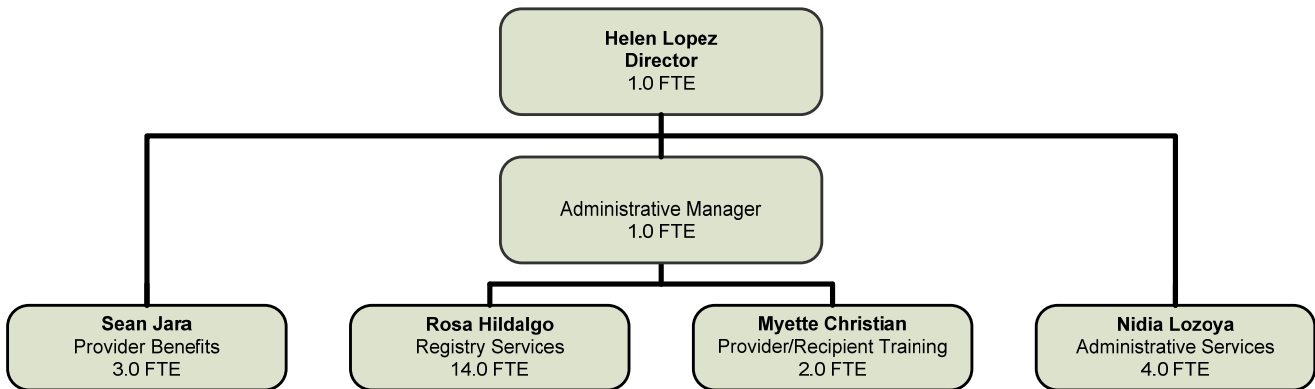


## IN HOME SUPPORTIVE SERVICES PUBLIC AUTHORITY Helen Lopez

### MISSION STATEMENT

The mission of the San Bernardino County In-Home Supportive Services (IHSS) Public Authority is to improve the availability and quality of IHSS and to eliminate barriers to providing assistance and choice for the aged and persons with disabilities who need support services to live independently and with dignity in the community.

### ORGANIZATIONAL CHART



# IHSS Public Authority

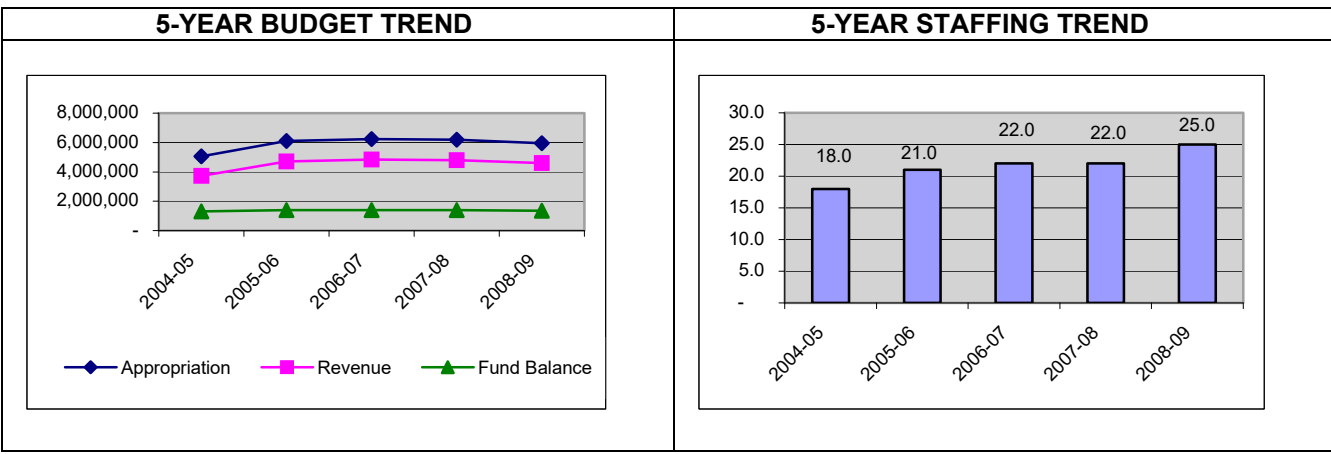
## DESCRIPTION OF MAJOR SERVICES

The In-Home Supportive Services (IHSS) program was created in 1973 to serve elderly, blind, and/or disabled individuals who are not able to remain safely in their home without assistance. Section 12302.25 of the Welfare and Institutions Code (WIC) mandates that each county, on or before January 1, 2003, must act as, or establish, an employer of record for collective bargaining purposes for IHSS care providers. The IHSS Public Authority (PA) was established to comply with this mandate.

In addition to its role in collective bargaining, the IHSS PA is required by WIC to provide the following mandated services:

- Establish a registry of potential care providers.
- Investigate the background and qualifications of potential care providers.
- Refer potential care providers from the registry to IHSS consumers upon request.
- Provide training for both IHSS care providers and consumers.
- Perform other functions related to the delivery of IHSS as designated by the governing board.

## BUDGET HISTORY



## PERFORMANCE HISTORY

	2004-05 Actual	2005-06 Actual	2006-07 Actual	2007-08 Modified Budget	2007-08 Estimate
Appropriation	3,962,137	5,186,464	4,846,079	6,199,887	3,876,347
Departmental Revenue	3,962,208	5,190,270	4,847,830	4,802,047	3,831,053
Fund Balance				1,397,840	
Budgeted Staffing				22.00	

Estimated appropriation in 2007-08 is expected to be less than budgeted primarily from not using any of the contingencies of \$1.3 million as well as the following:

Salaries and benefits were under budget by \$44,913 due to 3.0 vacant positions not being filled until April 2008 and an average vacancy rate of 14%.

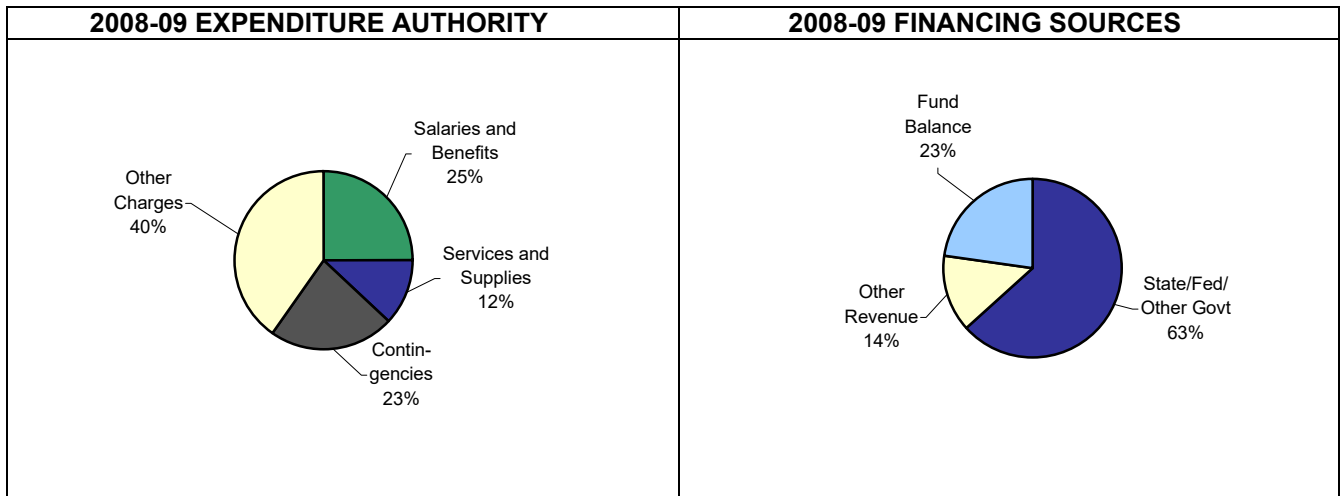
Services and supplies were under budget by \$100,710 primarily from savings in postage, office supplies, computer equipment, and staff training and travel expenses due to less than anticipated usage.

Other charges were under budget by \$846,420 due to a change of health insurance plan administrator from Inland Empire Health Plan (IEHP) to Service Employees International Union (SEIU) effective November 2007. Premiums were reduced by \$115,000 per month from \$250,000 to \$135,000 resulting in a savings to the program.



Transfers were under budget by \$26,720 primarily due to reduced personnel charges due to vacancies and the amount of time spent by administrative support positions in the Department of Aging (DAAS).

**ANALYSIS OF PROPOSED BUDGET**



GROUP: Other Agencies  
 DEPARTMENT: IHSS - Public Authority  
 FUND: IHSS - Public Authority

BUDGET UNIT: RHH 498  
 FUNCTION: Public Assistance  
 ACTIVITY: Other Assistance

	2004-05 Actual	2005-06 Actual	2006-07 Actual	2007-08 Estimate	2007-08 Final Budget	2008-09 Proposed Budget	Change From 2007-08 Final Budget
<b>Appropriation</b>							
Salaries and Benefits	899,570	1,035,412	1,042,062	1,214,841	1,259,754	1,481,366	221,612
Services and Supplies	451,607	375,598	379,939	469,511	570,221	660,399	90,178
Central Computer	13,088	14,844	17,149	18,128	15,653	18,497	2,844
Travel	-	-	-	-	-	44,000	44,000
Other Charges	2,522,241	3,648,263	3,325,496	2,101,311	2,902,437	2,306,000	(596,437)
Transfers	81,762	125,674	81,433	72,556	99,276	84,004	(15,272)
Contingencies	-	-	-	-	1,352,546	1,352,546	-
Total Exp Authority	3,968,268	5,199,791	4,846,079	3,876,347	6,199,887	5,946,812	(253,075)
Reimbursements	(6,131)	(13,327)	-	-	-	-	-
Total Appropriation	3,962,137	5,186,464	4,846,079	3,876,347	6,199,887	5,946,812	(253,075)
<b>Departmental Revenue</b>							
Use Of Money and Prop	17,746	25,910	32,615	42,416	14,500	38,000	23,500
State, Fed or Gov't Aid	3,075,713	4,165,999	3,972,285	3,125,012	3,949,726	3,758,260	(191,466)
Other Revenue	15	492	325	744	-	800	800
Total Revenue	3,093,474	4,192,401	4,005,225	3,168,172	3,964,226	3,797,060	(167,166)
Operating Transfers In	868,734	997,869	842,605	662,881	837,821	797,206	(40,615)
Total Financing Sources	3,962,208	5,190,270	4,847,830	3,831,053	4,802,047	4,594,266	(207,781)
Fund Balance					1,397,840	1,352,546	(45,294)
Budgeted Staffing					22.0	25.0	3.0

Salaries and benefits of \$1,481,366 fund 25.0 budgeted positions and are increasing by \$221,612 primarily resulting from the addition of 1.0 Administrative Manager and 2.0 Office Assistant III positions. The Administrative Manager has been added to assist the Executive Director by managing and coordinating the administrative services for the program and to implement a plan for Leadership Transition. The 2.0 Office Assistant III positions are being added to support the payroll customer service duties that the program is assuming from DAAS.

Salaries and benefits are budgeted using the current Memorandum of Understanding (MOU) rates effective through June 30, 2008. The county is currently in negotiations and once the MOU is approved, salary and



benefit rates will be effective July 1, 2008. Financing will be adjusted for amended salary and benefit rates, if applicable.

Services and supplies of \$660,399 include annual registry and provider health benefits database licensing and maintenance, provider and staff training, provider background investigations and finger printing and county overhead charges (COWCAP). The increase of \$90,178 is primarily due to printing and postage costs from the increased circulation of the quarterly newsletter, annual report and open enrollment materials. There are also additional costs for County Counsel charges associated with open enrollment and equipment costs for 3.0 new staff members.

Other charges of \$2,306,000 represent payments to the SEIU for provider health benefits. The decrease of \$596,437 is due to the health plan premiums being reduced by changing the plan administrator from IEHP to Long-Term Care Workers Trust effective November 2007. There will be an open enrollment for health benefits during 2008-09 and the number of plan participants is expected to increase.

Transfers of \$84,004 represent charges for administrative support. The decrease of \$15,272 is primarily due to a decrease in salaries and benefits charges for administrative support personnel in DAAS.

Use of money and property revenue of \$38,000 is interest earnings on the Public Authority's cash balance throughout the year. The increase of \$23,500 is due to more timely payments of the quarterly claims by the state.

Federal and state aid revenue of \$3,758,260 is the federal and state mandated share of Public Authority expenditures.

Operating transfers in of \$797,206 is the county's mandated local share of Public Authority expenditures.

# ECONOMIC AND COMMUNITY DEVELOPMENT CORPORATION

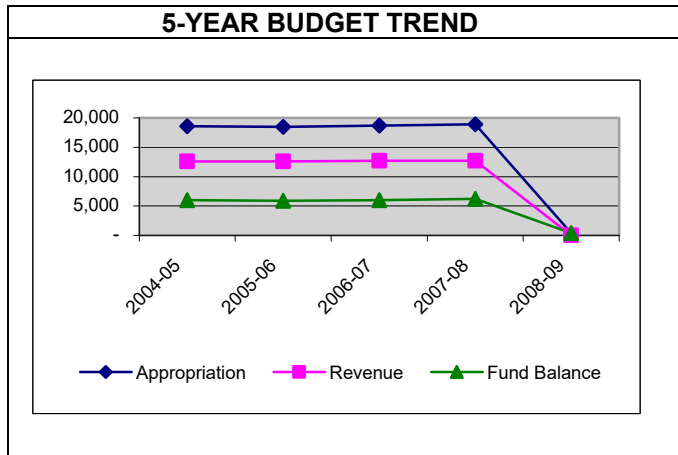
## Patricia M. Cole

**DESCRIPTION OF MAJOR SERVICES**

In September 1987 the Board of Supervisors formed the County of San Bernardino Economic and Community Development Corporation to provide additional methods of financing the acquisition of property, for and on behalf of private enterprise, to promote and enhance economic development and increase opportunities for useful employment. Another primary purpose was added in July 1998, to strengthen public-private partnerships and to expand the supply of decent, safe, sanitary, and affordable housing. The annual Economic and Community Development Corporation budget provides for professional services related to the issuance of bonds, promotion of the financing program, and other program related costs. Economic and Community Development Corporation is a function of the Economic Development Agency.

There is no staffing associated with this budget unit.

**BUDGET HISTORY**



**PERFORMANCE HISTORY**

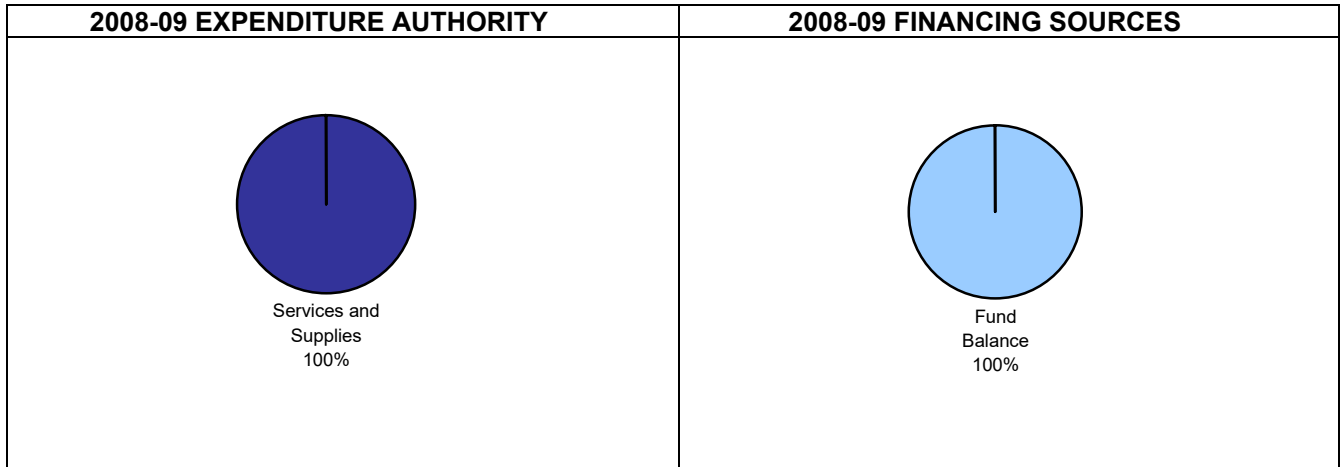
	2004-05 Actual	2005-06 Actual	2006-07 Actual	2007-08 Modified Budget	2007-08 Estimate
Appropriation	75	98	76	18,918	6,000
Departmental Revenue	(35)	240	279	12,700	150
Fund Balance				6,218	

In accordance with Section 29009 of the State Government Code, the entire unreserved fund balance must be appropriated each year. Accordingly, expenditures in this fund are typically less than budget. The amount not expended is carried over to the subsequent year's budget.

Estimated revenue is less than budgeted because no bonds were issued due to low market interest rates.



**ANALYSIS OF PROPOSED BUDGET**



GROUP: Economic Development  
 DEPARTMENT: Economic Development  
 FUND: Economic Development Corporation

BUDGET UNIT: SFI 499  
 FUNCTION: Public Assistance  
 ACTIVITY: Other Assistance

	2004-05 Actual	2005-06 Actual	2006-07 Actual	2007-08 Estimate	2007-08 Final Budget	2008-09 Proposed Budget	Change From 2007-08 Final Budget
<b>Appropriation</b>							
Services and Supplies	75	98	76	6,000	18,918	368	(18,550)
Total Appropriation	75	98	76	6,000	18,918	368	(18,550)
<b>Departmental Revenue</b>							
Use Of Money and Prop	(35)	240	279	150	200	-	(200)
Current Services	-	-	-	-	12,500	-	(12,500)
Total Revenue	(35)	240	279	150	12,700	-	(12,700)
Operating Transfers In	-	-	-	-	-	-	-
Total Financing Sources	(35)	240	279	150	12,700	-	(12,700)
Fund Balance					6,218	368	(5,850)

Since no bonds have been issued due to the low market interest rates, services and supplies have decreased to \$368 to reflect the estimated available fund balance.



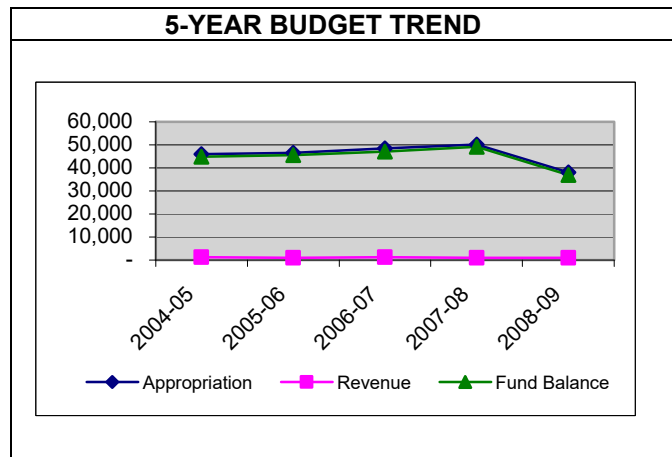
## COUNTY INDUSTRIAL DEVELOPMENT AUTHORITY (COIDA) Patricia M. Cole

### DESCRIPTION OF MAJOR SERVICES

In March 1981 the Board of Supervisors created the San Bernardino County Industrial Development Authority (CoIDA) to issue tax-exempt industrial bonds for the furtherance of economic development and the creation of new jobs within the County. The annual CoIDA budget provides for funding for the cost of professional services related to the issuance of bonds, promotion of the financing program and other program related costs. CoIDA is a function within the Economic Development Agency.

There is no staffing associated with this budget unit.

### BUDGET HISTORY



### PERFORMANCE HISTORY

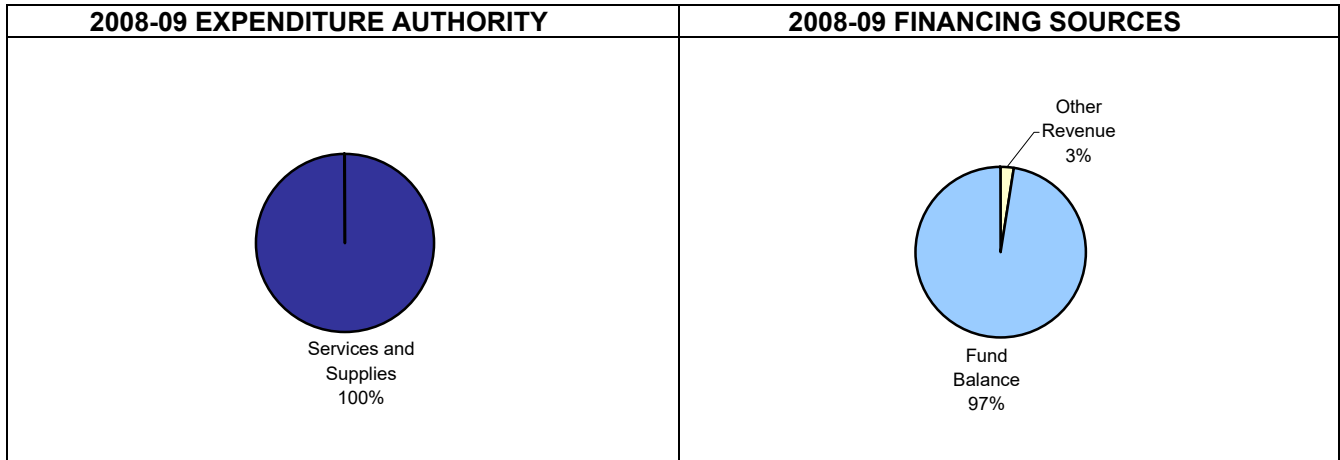
	2004-05 Actual	2005-06 Actual	2006-07 Actual	2007-08 Modified Budget	2007-08 Estimate
Appropriation	229	33	110	50,196	14,100
Departmental Revenue	962	1,573	2,194	1,000	1,900
Fund Balance				49,196	

In accordance with Section 29009 of the State Government Code, the entire unreserved fund balance must be appropriated each year. Accordingly, expenditures in this fund are typically less than budget. The amount not expended is carried over to the subsequent year's budget.





**ANALYSIS OF PROPOSED BUDGET**



GROUP: Economic Development  
 DEPARTMENT: Industrial Development Authority  
 FUND: Industrial Development Authority

BUDGET UNIT: SPG 510  
 FUNCTION: Public Assistance  
 ACTIVITY: Other Assistance

	2004-05 Actual	2005-06 Actual	2006-07 Actual	2007-08 Estimate		2007-08 Final Budget	2008-09 Proposed Budget	Change From 2007-08 Final Budget
<b>Appropriation</b>								
Services and Supplies	229	33	110	14,100		50,196	37,996	(12,200)
Total Appropriation	229	33	110	14,100		50,196	37,996	(12,200)
<b>Departmental Revenue</b>								
Use Of Money and Prop	962	1,573	2,194	1,900		1,000	1,000	-
Total Revenue	962	1,573	2,194	1,900		1,000	1,000	-
Fund Balance						49,196	36,996	(12,200)

Services and supplies of \$37,996 represent professional services associated with the issuance of bonds, promotion of the financing program and other related costs. The \$12,200 reduction in services and supplies is related to a decrease in fund balance.



# REDEVELOPMENT AGENCY

## Kathy Thomas

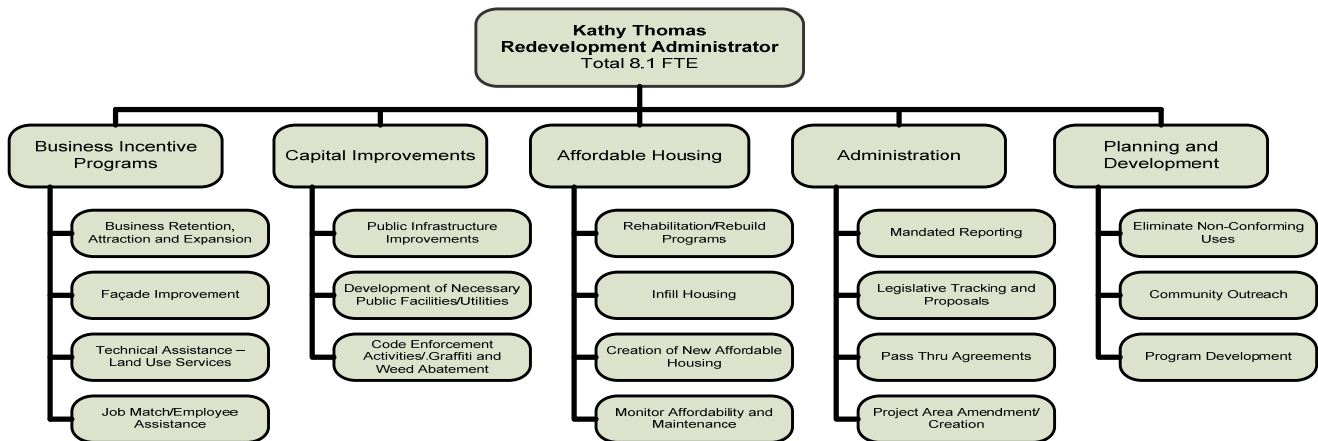
### MISSION STATEMENT

The County of San Bernardino Redevelopment Agency (CoRDA) serves as a catalyst to revitalize communities within established redevelopment project areas by: improving infrastructure, retaining and expanding opportunities for existing businesses, attracting new businesses and private investment, creating new jobs and affordable housing and improving the living conditions of residents. Through coordinated efforts with county departments and other jurisdictions, CoRDA implements strategic programs and projects that advance economic opportunities and foster a sense of community pride.

### STRATEGIC GOALS

1. Develop and implement inclusionary and replacement housing programs/projects to meet such needs and to increase, improve and preserve the redevelopment project areas' housing stock.
2. Assist in the development of capital improvements to eliminate and prevent the acceleration of physical blight and encourage the better utilization of real property and new private enterprise investment.
3. Assist in the development of business incentive programs to reconstruct, upgrade and expand commercial areas in conformance with the general plan (as amended) and community plans.
4. Effectuate the comprehensive planning, redesign, replanning, reconstruction, and/or rehabilitation of project areas in such a manner as to facilitate a higher and better utilization of land uses in accordance with the general plan.

### ORGANIZATIONAL CHART



### SUMMARY OF BUDGET UNITS

	2008-09			
	Appropriation	Revenue	Fund Balance	Staffing
<b>Redevelopment</b>				
Speedway Project Area	60,153,467	14,024,567	46,128,900	8.1
Cedar Glen Project Area	10,404,562	836,460	9,568,102	-
VVEDA Project Area	1,400,576	256,105	1,144,471	-
Mission Boulevard Joint Project Area	149,843	24,570	125,273	-
Total Other Agencies	72,108,448	15,141,702	56,966,746	8.1

Detailed information for each budget unit follows, along with a description of the services provided, budget unit history and applicable performance measures.



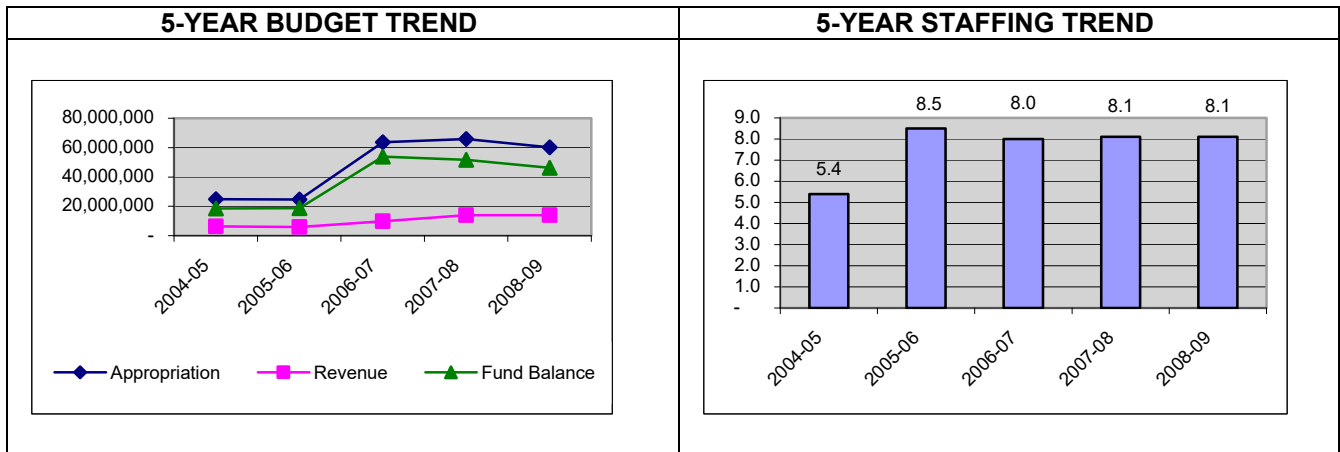
## Speedway Project Area

### DESCRIPTION OF MAJOR SERVICES

In 1995, the former Kaiser Steel Mill site and other blighted industrial properties in its vicinity were formed to create the San Sevaine Redevelopment Project Area, currently known as the *Speedway Redevelopment Project Area* (Speedway). The Speedway was amended in 2004 and 2005 to add additional territory resulting in a total acreage of 3,426 acres.

San Sevaine Bond Series 2005 A was funded in December, 2005 with net proceeds of \$34,691,164. Projects to be undertaken with these bond proceeds include assistance in the improvement of public infrastructure (work on the Etiwanda/San Sevaine Flood Control Channel (South), West Fontana Flood Control Channel, road work on the Cherry/I-10 interchange, road construction on Cherry and San Bernardino Avenues), the development of public facilities such as the construction of a fire station, land acquisition, and economic incentives for businesses within the project area and acquisition of new business for the area. Proceeds allocated for housing projects will be used for home rehabilitation programs, land acquisition, infill housing programs and affordable housing development assistance.

### BUDGET HISTORY



### PERFORMANCE HISTORY

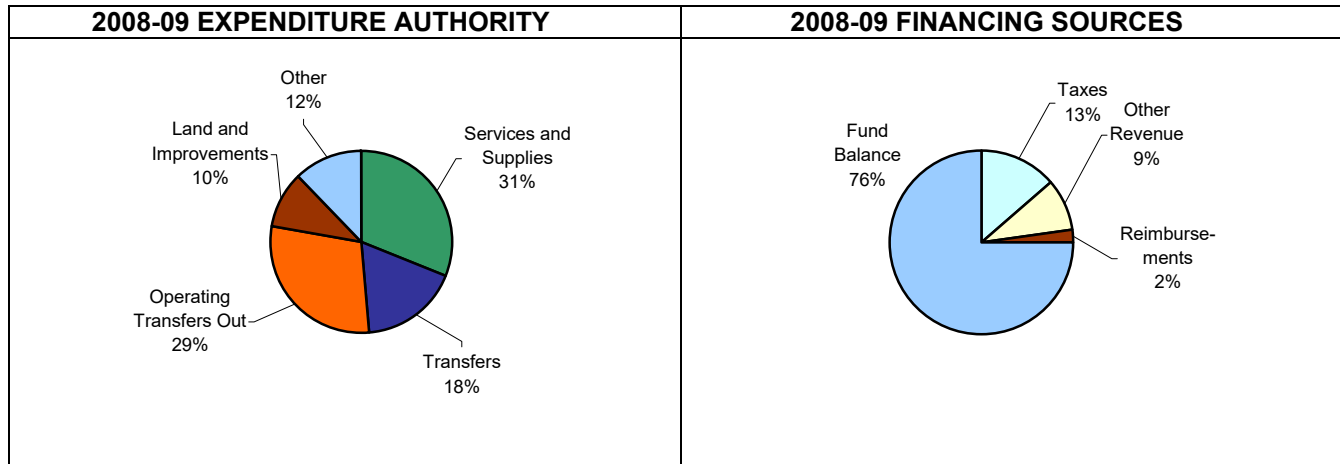
	2004-05 Actual	2005-06 Actual	2006-07 Actual	2007-08 Modified Budget	2007-08 Estimate
Appropriation	9,387,758	6,243,814	18,281,948	65,759,453	19,816,116
Departmental Revenue	9,796,641	43,657,573	14,007,700	14,027,786	14,213,349
Fund Balance				51,731,667	
Budgeted Staffing				8.1	

In accordance with Section 29009 of the State Government Code, the entire unreserved fund balance must be appropriated each year. Accordingly, expenditures in these funds are typically less than budget. The amount not expended is carried over to the subsequent year's budget.

The Agency saw a large increase in revenue in 2005-06 due to the San Sevaine Bond Series 2005 A being funded in December 2005 with net proceeds of \$34,691,164. Per the official statement of this bond series, these funds can only be spent on designated capital improvement projects. In 2007-08, departmental revenue is anticipated to be slightly higher than budget due to an increase in interest revenue.



**ANALYSIS OF PROPOSED BUDGET**



**GROUP:** Economic Development  
**DEPARTMENT:** Redevelopment Agency  
**FUND:** Speedway Project Area

**BUDGET UNIT:** DBR, SPD, SPE, SPF & SPH  
**FUNCTION:** General  
**ACTIVITY:** Other General

	2004-05 Actual	2005-06 Actual	2006-07 Actual	2007-08 Estimate	2007-08 Final Budget	2008-09 Proposed Budget	Change From 2007-08 Final Budget
<b>Appropriation</b>							
Salaries and Benefits	349,242	637,585	508,835	695,300	928,317	939,563	11,246
Services and Supplies	2,308,372	1,072,206	475,374	2,094,790	18,351,009	18,650,858	299,849
Central Computer	317	145	4,418	9,203	9,203	10,195	992
Travel	-	-	-	-	-	12,900	12,900
Other Charges	1,648,769	1,909,571	3,797,350	3,758,750	3,758,750	3,794,450	35,700
Land and Improvements	-	2,666,186	7,082,238	6,000,000	6,000,000	6,000,000	-
Equipment	-	14,388	-	-	-	-	-
Transfers	471,924	454,027	3,010,406	4,022,516	9,201,576	10,646,998	1,445,422
Contingencies	-	-	-	-	3,891,241	3,891,241	-
<b>Total Exp Authority</b>	<b>4,778,624</b>	<b>6,754,108</b>	<b>14,878,621</b>	<b>16,580,559</b>	<b>42,140,096</b>	<b>43,946,205</b>	<b>1,806,109</b>
Reimbursements	(202,237)	(719,979)	(527,562)	(575,631)	(1,392,212)	(1,320,355)	71,857
<b>Total Appropriation</b>	<b>4,576,387</b>	<b>6,034,129</b>	<b>14,351,059</b>	<b>16,004,928</b>	<b>40,747,884</b>	<b>42,625,850</b>	<b>1,877,966</b>
Operating Transfers Out	4,811,371	209,685	3,930,889	3,811,188	25,011,569	17,527,617	(7,483,952)
<b>Total Requirements</b>	<b>9,387,758</b>	<b>6,243,814</b>	<b>18,281,948</b>	<b>19,816,116</b>	<b>65,759,453</b>	<b>60,153,467</b>	<b>(5,605,986)</b>
<b>Departmental Revenue</b>							
Taxes	4,661,700	12,785,281	15,843,219	8,206,328	8,574,336	8,288,391	(285,945)
Use Of Money and Prop	396,409	1,185,010	2,486,621	2,035,936	1,094,700	1,346,800	252,100
State, Fed or Gov't Aid	170	3,818	2,502	-	-	-	-
Current Services	(73,009)	(106,996)	(88,031)	-	-	-	-
Other Revenue	-	(5,110,390)	(7,878,783)	-	600,000	-	(600,000)
Other Financing Sources	600,000	34,691,165	-	-	-	-	-
<b>Total Revenue</b>	<b>5,585,270</b>	<b>43,447,888</b>	<b>10,365,528</b>	<b>10,242,264</b>	<b>10,269,036</b>	<b>9,635,191</b>	<b>(633,845)</b>
Operating Transfers In	4,211,371	209,685	3,642,172	3,971,085	3,758,750	4,389,376	630,626
<b>Total Financing Sources</b>	<b>9,796,641</b>	<b>43,657,573</b>	<b>14,007,700</b>	<b>14,213,349</b>	<b>14,027,786</b>	<b>14,024,567</b>	<b>(3,219)</b>
Fund Balance					51,731,667	46,128,900	(5,602,767)
Budgeted Staffing					8.1	8.1	-

Salaries and benefits of \$939,563 fund 8.1 budgeted positions and are increasing by \$11,246. The increased cost for salaries and benefits is the result of step increases partially offset by a decrease in worker's compensation.

Services and supplies of \$18,650,858 include the budgeting of undesignated fund balance, various costs associated with improving the area around the Auto Club Speedway and miscellaneous office expenses. Services and supplies have increased by \$299,849 generally due to an increase in anticipated project expenditures.



Travel is a new appropriation unit for 2008-09. The amount budgeted of \$12,900 reflects anticipated travel costs in the areas of private mileage, air travel, hotel, car rental and conference fees for this budget unit. These costs were based on departmental analysis of past travel related expenses previously budgeted in the services and supplies appropriation unit.

Other charges of \$3,794,450 represent debt service payments. Other charges increased by \$35,700 due to increases in principal and interest in the 2005A Series Bond payment schedule.

Land and improvements of \$6,000,000 include costs associated with the Rosemary/Iris Voluntary Sale Program and commercial/industrial land acquisitions. Both the Rosemary/Iris Voluntary Sale Program and the commercial/industrial land program have a \$3.0 million budget.

Transfers of \$10,646,998 to other county departments represent various costs, which include road projects, administrative charges, and storm drainage construction. Transfers have increased by \$1,445,422 primarily for road projects, flood control projects, and increases in administrative charges.

Contingencies of \$3,891,241 include funds held by the Trustee, Bank of NY for the 2005 Series A Tax Allocation Bonds.

Reimbursements of \$1,320,355 primarily represent payments from other Redevelopment Agency project funds to the Speedway administrative fund for staff charges. The decrease in reimbursements of \$71,857 includes decreases from other RDA project funds in the amount of \$77,549 for administrative charges and a \$5,692 increase from the Economic Development Agency for lease costs.

Operating transfers out of \$17,527,617 generally represent payments to County Fire for construction of a fire station and payments to others for a variety of projects. Operating transfers out have decreased by \$7,483,952 as 2005 Series A Tax Allocation Bond proceeds have been used in 2007-08 and are expected to be continued to be used in 2008-09.

Departmental revenue of \$14,024,567 reflects tax increment, interest revenue, and operating transfers in. The net decrease in revenue of \$3,219 represents an anticipated decrease in tax increment of \$285,945 almost fully offset by increases in interest revenue of \$252,100 and other revenue/operating transfers in of \$30,626. Other revenue of \$600,000 was reclassified to operating transfers in for 2008-09.

PERFORMANCE MEASURES				
Description of Performance Measure	2006-07 Actual	2007-08 Projected	2007-08 Estimated	2008-09 Projected
The number of applicants assisted in the Cedar Glen Housing Programs (Home Rehabilitation Loan and Grant Program and Land Use Services Program).	N/A	10	10	15
The number of applicants assisted in the Façade Improvement Program.	N/A	10	3	10
The number of applicants assisted in the Volunteer Demolition Grant Program	N/A	10	5	10
The total number of properties acquired as part of the Rosemary/Iris Voluntary Sales program to alleviate incompatible land use.	20	40	29	44



## Cedar Glen Project Area

### DESCRIPTION OF MAJOR SERVICES

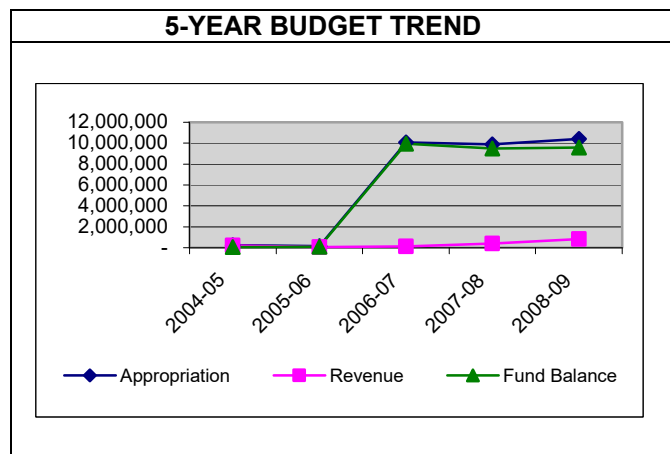
In 2004, the *Cedar Glen Disaster Recovery Project Area* (Cedar Glen), consisting of 837 acres, was adopted to assist with the rebuilding of the community that was destroyed by the 2003 Old Fire.

Included in this project area are housing funds, which are used to conserve and/or expand the supply of affordable housing to low and moderate-income households. Based on regulations, 20% of the gross tax increment revenues are set aside and used for affordable housing.

Initial plan preparation and operating expenses were funded through a \$75,000 loan from the Speedway Project Area and subsequent loans from the county general fund of \$365,000. In addition, in December of 2005, the Board of Supervisors approved a loan of \$10.0 million from the county general fund to Cedar Glen to begin the water and road improvements. The loans will be repaid when the project area generates sufficient tax increment revenues or other financing is available.

There are no budgeted positions assigned to this project area, however administrative and staffing costs are allocated to this project area based upon time studies.

### BUDGET HISTORY



### PERFORMANCE HISTORY

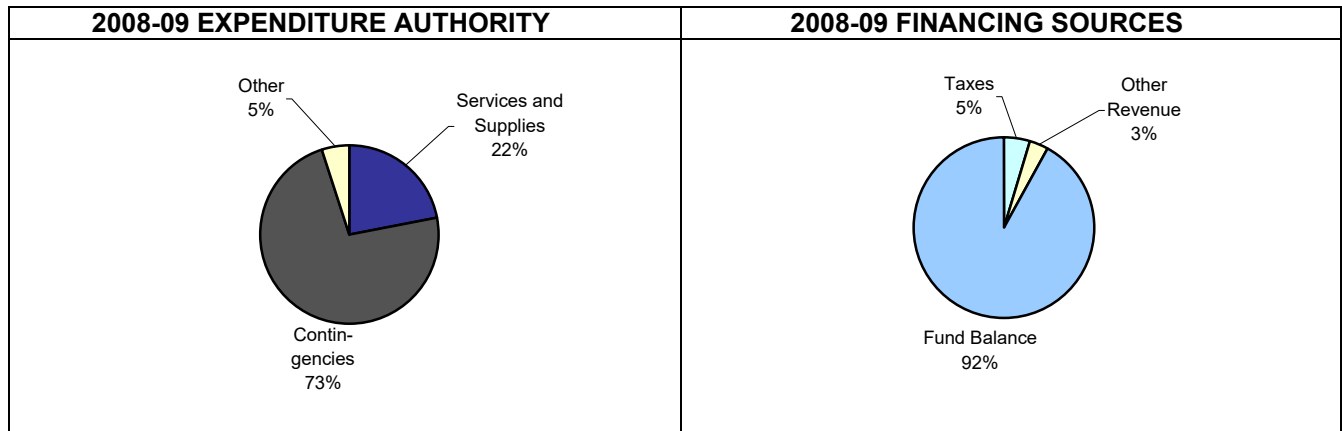
	2004-05 Actual	2005-06 Actual	2006-07 Actual	2007-08 Modified Budget	2007-08 Estimate
Appropriation	156,767	418,300	1,267,592	9,878,195	752,123
Departmental Revenue	293,426	10,297,254	788,348	403,250	845,280
Fund Balance				9,474,945	

In accordance with Section 29009 of the State Government Code, the entire unreserved fund balance must be appropriated each year. Accordingly, expenditures in these funds are typically less than budget. The amount not expended is carried over to the subsequent year's budget. In addition, \$7.6 million of the loan proceeds are in contingencies for future approved projects, as required by the loan terms.

Departmental revenue is estimated to be greater than budget in 2007-08. Both tax increment revenue and interest revenue are estimated to be significantly greater than budget for 2007-08 by approximately \$181,830 and \$260,200 respectively.



**ANALYSIS OF PROPOSED BUDGET**



**GROUP:** Economic Development  
**DEPARTMENT:** Redevelopment Agency  
**FUND:** Cedar Glen Disaster Project Area

**BUDGET UNIT:** SPK, SPL, DBT  
**FUNCTION:** General  
**ACTIVITY:** Other General

	2004-05 Actual	2005-06 Actual	2006-07 Actual	2007-08 Estimate	2007-08 Final Budget	2008-09 Proposed Budget	Change From 2007-08 Final Budget
<b>Appropriation</b>							
Services and Supplies	111,473	107,747	60,101	10,120	1,425,851	2,294,655	868,804
Land and Improvements	-	-	311,076	-	59,454	59,454	-
Transfers	45,294	310,553	896,415	342,003	392,595	450,453	57,858
Contingencies	-	-	-	-	7,600,000	7,600,000	-
<b>Total Appropriation</b>	<b>156,767</b>	<b>418,300</b>	<b>1,267,592</b>	<b>352,123</b>	<b>9,477,900</b>	<b>10,404,562</b>	<b>926,662</b>
Operating Transfers Out	-	-	-	400,000	400,295	-	(400,295)
<b>Total Requirements</b>	<b>156,767</b>	<b>418,300</b>	<b>1,267,592</b>	<b>752,123</b>	<b>9,878,195</b>	<b>10,404,562</b>	<b>526,367</b>
<b>Departmental Revenue</b>							
Taxes	-	240,367	672,985	478,080	296,250	482,860	186,610
Use Of Money and Prop	3,426	80,965	454,480	367,200	107,000	353,600	246,600
State, Fed or Gov't Aid	-	634	1,705	-	-	-	-
Current Services	-	(2,057)	(3,305)	-	-	-	-
Other Revenue	-	(109,655)	(337,517)	-	-	-	-
Other Financing Sources	-	10,075,000	-	-	-	-	-
<b>Total Revenue</b>	<b>3,426</b>	<b>10,285,254</b>	<b>788,348</b>	<b>845,280</b>	<b>403,250</b>	<b>836,460</b>	<b>433,210</b>
Operating Transfers In	290,000	12,000	-	-	-	-	-
<b>Total Financing Sources</b>	<b>293,426</b>	<b>10,297,254</b>	<b>788,348</b>	<b>845,280</b>	<b>403,250</b>	<b>836,460</b>	<b>433,210</b>
<b>Fund Balance</b>					<b>9,474,945</b>	<b>9,568,102</b>	<b>93,157</b>

Services and supplies of \$2,294,655 primarily represent undesignated fund balance carried over from previous years for future projects and/or improvements. Services and supplies increased by \$868,804 primarily due to the increase in project expenditures of \$554,929, professional services of \$306,380, and miscellaneous expenses of \$7,495.

Land and improvements of \$59,454 is to acquire land for the development of a well to serve the project area.

Transfers of \$450,453 represent administrative fees to the Speedway administrative fund. Increases of \$57,858 are associated with increased administrative costs.

Contingencies of \$7,600,000 are necessary because, per the Cedar Glen loan agreement, the Board of Supervisors must approve all additional projects utilizing the loan funds. Upon approval of additional projects, the funds will be transferred to the appropriate expenditure category for use.

No operating transfers out are budgeted in 2008-09 as the road and water projects funded with the initial portion of the county loan are anticipated to be completed in 2007-08.

Departmental revenue of \$836,460 includes funding from projected tax increment as well as revenue from interest. The increase in revenue of \$433,210 is related to increases in both tax increment revenue and interest revenue to reflect current trend.



## Victor Valley Economic Development Authority Project Area

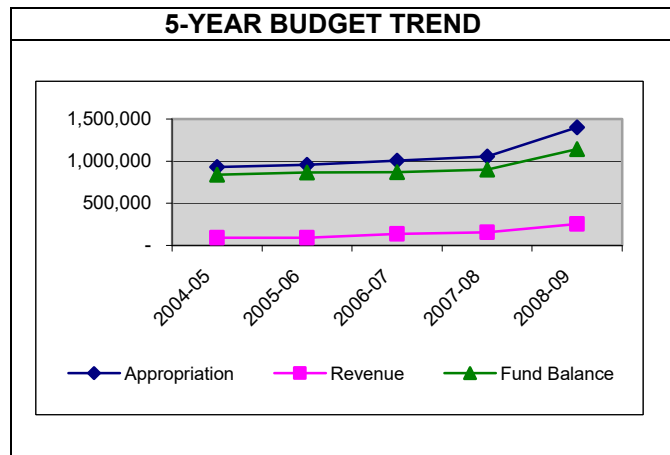
### DESCRIPTION OF MAJOR SERVICES

In 1993, the *Victor Valley Economic Development Authority* (VVEDA), a joint powers authority, was established for the purpose of providing economic development in and around the former George Air Force Base. Five jurisdictions oversee the economic development of the area, which include: the Cities of Victorville, Hesperia and Adelanto, the town of Apple Valley, and the County of San Bernardino. The recent eighth amendment to the project area increased total acreage to 90,236 acres. The same amendment also increased the unincorporated portion of VVEDA to approximately 22,472 acres. VVEDA is administered by the City of Victorville.

Included in this project area are housing funds, which are used to conserve and/or expand the supply of affordable housing to low and moderate-income households. Based on regulations, 20% of the gross tax increment revenues are set aside and used for affordable housing.

There are no budgeted positions assigned to this project area, however administrative and staffing costs are allocated to this project area based upon time studies.

### BUDGET HISTORY



The trend for the VVEDA budget represents a small increase over the past four years. For 2008-09, the lead agency estimates of tax increment revenue for the project area increased from prior year by over 150%.

### PERFORMANCE HISTORY

	<b>2004-05 Actual</b>	<b>2005-06 Actual</b>	<b>2006-07 Actual</b>	<b>2007-08 Modified Budget</b>	<b>2007-08 Estimate</b>
Appropriation	47,425	145,867	178,158	1,056,238	137,876
Departmental Revenue	37,465	56,508	210,566	155,550	381,659
Fund Balance				900,688	

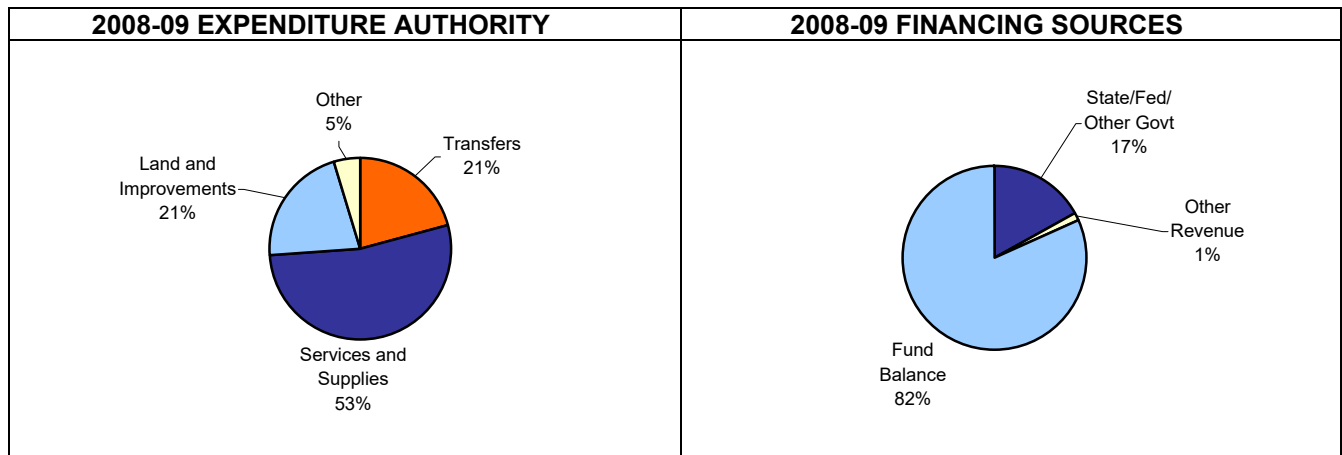
In accordance with Section 29009 of the State Government Code, the entire unreserved fund balance must be appropriated each year. Accordingly, expenditures in these funds are typically less than budget. The amount not expended is carried over to the subsequent year's budget.

Departmental revenue is estimated to be greater than budget in 2007-08 due to anticipated increases in interest revenue and tax increment revenue.





**ANALYSIS OF PROPOSED BUDGET**



**GROUP:** Economic Development  
**DEPARTMENT:** Redevelopment Agency  
**FUND:** Victor Valley Economic Development Authority Project Area

**BUDGET UNIT:** MPV, MPW  
**FUNCTION:** General  
**ACTIVITY:** Other General

	2004-05 Actual	2005-06 Actual	2006-07 Actual	2007-08 Estimate	2007-08 Final Budget	2008-09 Proposed Budget	Change From 2007-08 Final Budget
<b>Appropriation</b>							
Services and Supplies	31,649	61,334	96,477	200	879,200	743,774	(135,426)
Other Charges	(8,532)	-	15,082	60,024	20,000	66,650	46,650
Land and Improvements	-	-	-	-	-	300,000	300,000
Transfers	24,308	84,533	66,599	77,652	157,038	290,152	133,114
<b>Total Appropriation</b>	<b>47,425</b>	<b>145,867</b>	<b>178,158</b>	<b>137,876</b>	<b>1,056,238</b>	<b>1,400,576</b>	<b>344,338</b>
<b>Departmental Revenue</b>							
Use Of Money and Prop	17,163	28,666	40,233	35,100	17,450	17,450	-
State, Fed or Gov't Aid	20,302	27,842	170,333	346,559	138,100	238,655	100,555
<b>Total Revenue</b>	<b>37,465</b>	<b>56,508</b>	<b>210,566</b>	<b>381,659</b>	<b>155,550</b>	<b>256,105</b>	<b>100,555</b>
Fund Balance					900,688	1,144,471	243,783

Services and supplies of \$743,774 represent undesignated fund balance. Services and supplies decreased by \$135,426 due to anticipated increases in land purchases.

Other charges of \$66,650 represent administrative charges paid to the Victor Valley Economic Development Authority. Other charges has increased by \$46,650.

Land and improvements of \$300,000 include costs associated with commercial and/or industrial land acquisitions.

Transfers of \$290,152 include administrative charges paid to the Speedway administrative fund. The increase of \$133,114 is due to the development of new programs in the VVEDA project area.

Departmental revenue of \$256,105 consists of tax increment revenue distributed by the lead agency and revenue from interest. The increase in revenue of \$100,555 represents increases in tax increment revenue. Lead agency estimates of tax increment revenue for the project area increased from prior year by 73%. Due to this significant increase, projects will be identified as actual tax increment is received by the agency.



## Mission Boulevard Joint Project Area

### DESCRIPTION OF MAJOR SERVICES

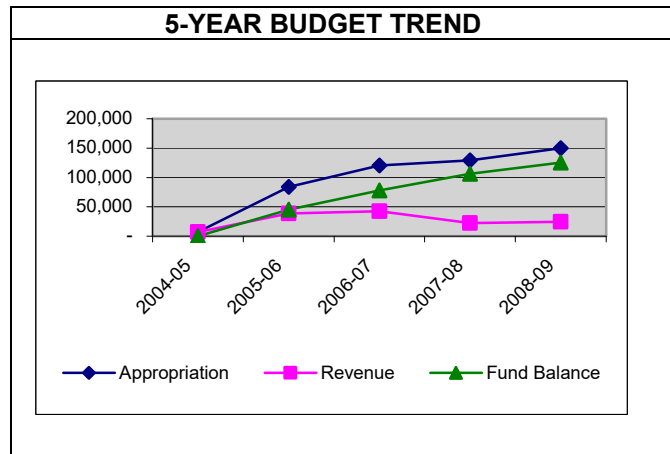
In 2003, the County approved the *Mission Boulevard Joint Redevelopment Project Area* (Mission Boulevard) with the City of Montclair. Mission Boulevard totals approximately 404 acres and is administered by the City of Montclair.

The Mission Boulevard Joint Project Area only includes housing set aside funds, which are used to conserve and/or expand the supply of affordable housing to low and moderate-income households.

A \$50,000 loan was received from the county general fund in 2004-05 to cover costs until sufficient tax increment revenue is generated to repay the loan.

There are no budgeted positions assigned to this project area, however administrative and staffing costs are allocated to this project area based upon time studies.

### BUDGET HISTORY



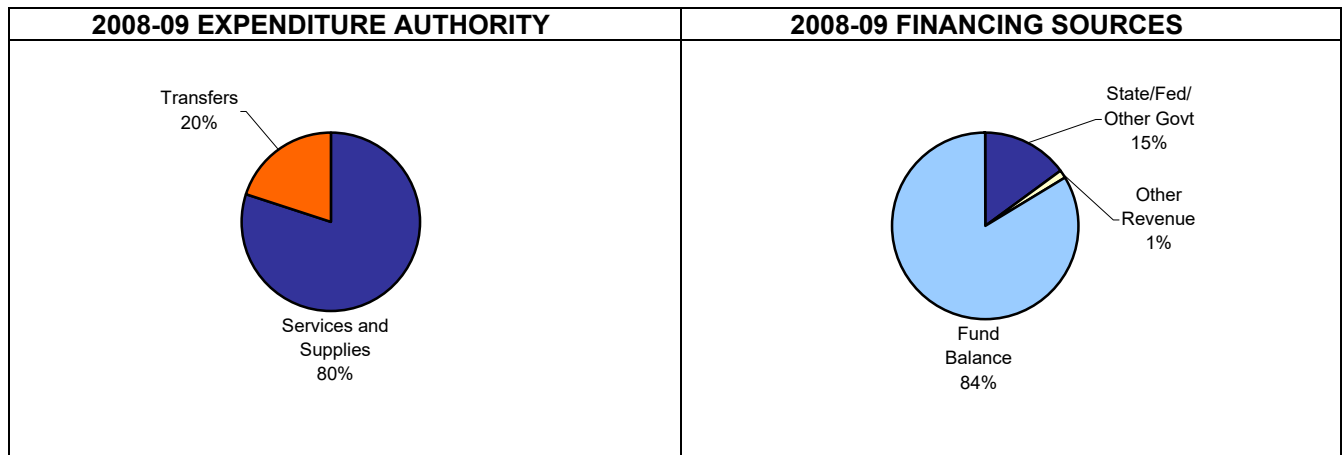
### PERFORMANCE HISTORY

	2004-05 Actual	2005-06 Actual	2006-07 Actual	2007-08 Modified Budget	2007-08 Estimate
Appropriation	10,091	35,644	26,461	129,016	6,893
Departmental Revenue	6,538	68,341	55,052	22,570	25,720
Fund Balance				106,446	

In accordance with Section 29009 of the State Government Code, the entire unreserved fund balance must be appropriated each year. Accordingly, expenditures in this fund are typically less than budget. The amount not expended is carried over to the subsequent year's budget.



**ANALYSIS OF PROPOSED BUDGET**



**GROUP:** Economic Development  
**DEPARTMENT:** Redevelopment Agency  
**FUND:** Mission Boulevard Joint Project Area

**BUDGET UNIT:** SPM MIS  
**FUNCTION:** General  
**ACTIVITY:** Other General

	2004-05 Actual	2005-06 Actual	2006-07 Actual	2007-08 Estimate	2007-08 Final Budget	2008-09 Proposed Budget	Change From 2007-08 Final Budget
<b>Appropriation</b>							
Services and Supplies	31	781	125	500	66,201	119,813	53,612
Transfers	10,060	34,863	26,336	6,393	62,815	30,030	(32,785)
<b>Total Appropriation</b>	<b>10,091</b>	<b>35,644</b>	<b>26,461</b>	<b>6,893</b>	<b>129,016</b>	<b>149,843</b>	<b>20,827</b>
<b>Departmental Revenue</b>							
Use Of Money and Prop	467	1,451	2,289	3,150	2,000	2,000	-
State, Fed or Gov't Aid	-	-	52,763	22,570	20,570	22,570	2,000
Other Financing Sources	6,071	66,890	-	-	-	-	-
<b>Total Revenue</b>	<b>6,538</b>	<b>68,341</b>	<b>55,052</b>	<b>25,720</b>	<b>22,570</b>	<b>24,570</b>	<b>2,000</b>
Fund Balance					106,446	125,273	18,827

Services and supplies of \$119,813 represent undesignated fund balance. Services and supplies increased \$53,612 due to increase in fund balance, reduction in transfers, and increase in departmental revenue.

Transfers of \$30,030 include administrative charges paid to the Speedway administrative fund. The decrease of \$32,785 is based upon administrative time studies in 2007-08.

Departmental revenue of \$24,570 primarily represents tax increment revenue distributed by the lead agency, which is anticipated to increase by \$2,000 in 2008-09.

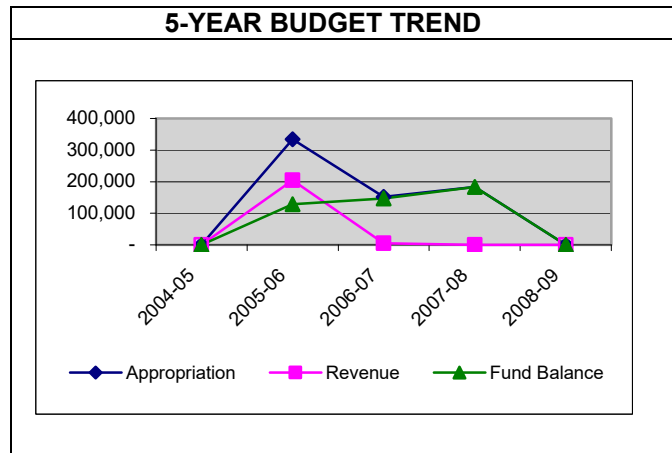


## Proposed Bloomington Project Area

### DESCRIPTION OF MAJOR SERVICES

On November 9, 2004, the County of San Bernardino’s Redevelopment Agency (CoRDA) initiated the formation of a redevelopment project area in and around the community of Bloomington. In November 2005, community members requested that the Redevelopment Agency suspend the project area formation process while the possibility of incorporation for the area was evaluated. While the process was on hold, Senator Christine Kehoe drafted Senate Bill 1206, which was approved and chaptered in September 2006. This new legislation became effective January 1, 2007, which would require CoRDA to start the redevelopment formation process anew. As a result of these factors, the Board of Supervisors terminated the proposed project area on January 30, 2007. Due to delays in returning the remaining funds to the county general fund in 2006-07, this fund was not closed until 2007-08.

### BUDGET HISTORY



### PERFORMANCE HISTORY

	<b>2004-05 Actual</b>	<b>2005-06 Actual</b>	<b>2006-07 Actual</b>	<b>2007-08 Modified Budget</b>	<b>2007-08 Estimate</b>
Appropriation	173,744	193,455	17,778	183,032	185,624
Departmental Revenue	302,579	211,255	9,575	-	2,592
Fund Balance				183,032	

All remaining principal and interest will be returned to the county general fund.



**ANALYSIS OF PROPOSED BUDGET**

GROUP: Economic Development  
 DEPARTMENT: Redevelopment Agency  
 FUND: Proposed Bloomington Project Area

BUDGET UNIT: SPN BLO  
 FUNCTION: General  
 ACTIVITY: Other General

	2004-05 Actual	2005-06 Actual	2006-07 Actual	2007-08 Estimate	2007-08 Final Budget	2008-09 Proposed Budget	Change From 2007-08 Final Budget
<b>Appropriation</b>							
Services and Supplies	111,170	56,811	135	-	-	-	-
Other Charges	-	-	-	185,624	183,032	-	(183,032)
Transfers	62,574	136,644	17,643	-	-	-	-
<b>Total Appropriation</b>	<b>173,744</b>	<b>193,455</b>	<b>17,778</b>	<b>185,624</b>	<b>183,032</b>	<b>-</b>	<b>(183,032)</b>
<b>Departmental Revenue</b>							
Use Of Money and Prop	2,579	11,251	9,575	2,592	-	-	-
Other Revenue	-	4	-	-	-	-	-
<b>Total Revenue</b>	<b>2,579</b>	<b>11,255</b>	<b>9,575</b>	<b>2,592</b>	<b>-</b>	<b>-</b>	<b>-</b>
Operating Transfers In	300,000	200,000	-	-	-	-	-
<b>Total Financing Sources</b>	<b>302,579</b>	<b>211,255</b>	<b>9,575</b>	<b>2,592</b>	<b>-</b>	<b>-</b>	<b>-</b>
Fund Balance					183,032	-	(183,032)

The changes to this budget reflect the termination of the proposed project area.

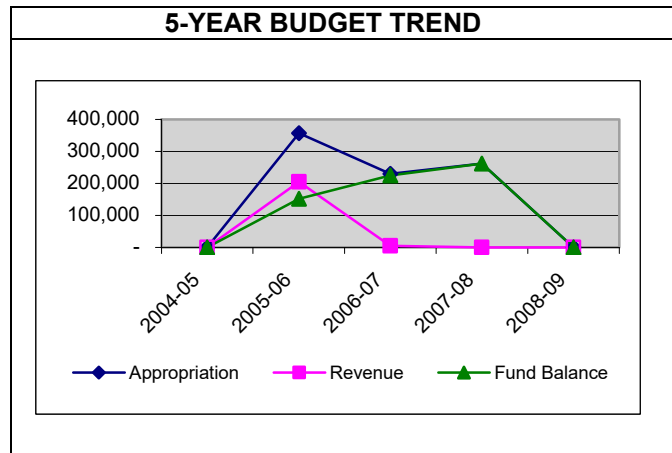


## Proposed Cajon Project Area

### DESCRIPTION OF MAJOR SERVICES

On November 9, 2004, the County of San Bernardino’s Redevelopment Agency (CoRDA) initiated the formation of a redevelopment project area in and around the community of Cajon. In November 2005, community members requested that the Redevelopment Agency suspend the project area formation process. While the process was on hold, Senator Christine Kehoe drafted Senate Bill 1206, which was approved and chaptered in September 2006. This new legislation became effective January 1, 2007, which would require CoRDA to start the redevelopment formation process anew. As a result of these factors, the Board of Supervisors terminated the proposed project area on January 30, 2007. Due to delays in returning the remaining funds to the county general fund in 2006-07, this fund was not closed until 2007-08.

### BUDGET HISTORY



### PERFORMANCE HISTORY

	<b>2004-05 Actual</b>	<b>2005-06 Actual</b>	<b>2006-07 Actual</b>	<b>2007-08 Modified Budget</b>	<b>2007-08 Estimate</b>
Appropriation	150,351	139,061	1,824	216,830	265,541
Departmental Revenue	302,655	211,696	12,241	-	3,711
Fund Balance				216,830	

All remaining principal and interest distributions will be returned to the county general fund.



**ANALYSIS OF PROPOSED BUDGET**

GROUP: Economic Development  
 DEPARTMENT: Redevelopment Agency  
 FUND: Proposed Cajon Project Area

BUDGET UNIT: SPO MUS  
 FUNCTION: General  
 ACTIVITY: Other General

	2004-05 Actual	2005-06 Actual	2006-07 Actual	2007-08 Estimate	2007-08 Final Budget	2008-09 Proposed Budget	Change From 2007-08 Final Budget
<b>Appropriation</b>							
Services and Supplies	93,544	66,543	101	-	-	-	-
Other Charges	-	-	-	265,541	261,830	-	(261,830)
Transfers	56,807	72,518	1,723	-	-	-	-
Total Appropriation	150,351	139,061	1,824	265,541	261,830	-	(261,830)
<b>Departmental Revenue</b>							
Fines and Forfeitures	2,655	11,694	12,241	3,711	-	-	-
Other Revenue	-	2	-	-	-	-	-
Total Revenue	2,655	11,696	12,241	3,711	-	-	-
Operating Transfers In	300,000	200,000	-	-	-	-	-
Total Financing Sources	302,655	211,696	12,241	3,711	-	-	-
Fund Balance					261,830	-	(261,830)

The changes to this budget reflect the termination of the proposed project area.

