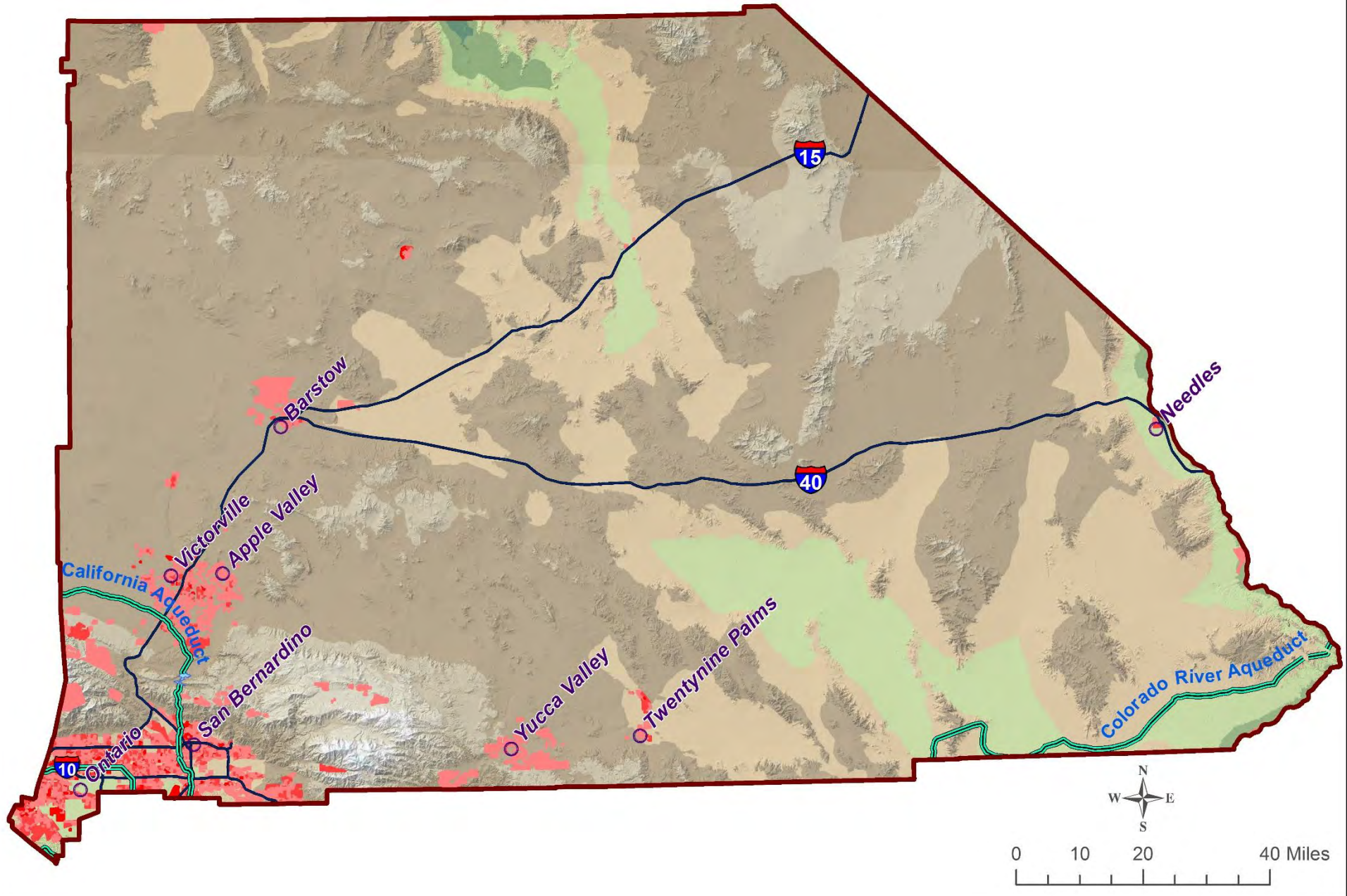
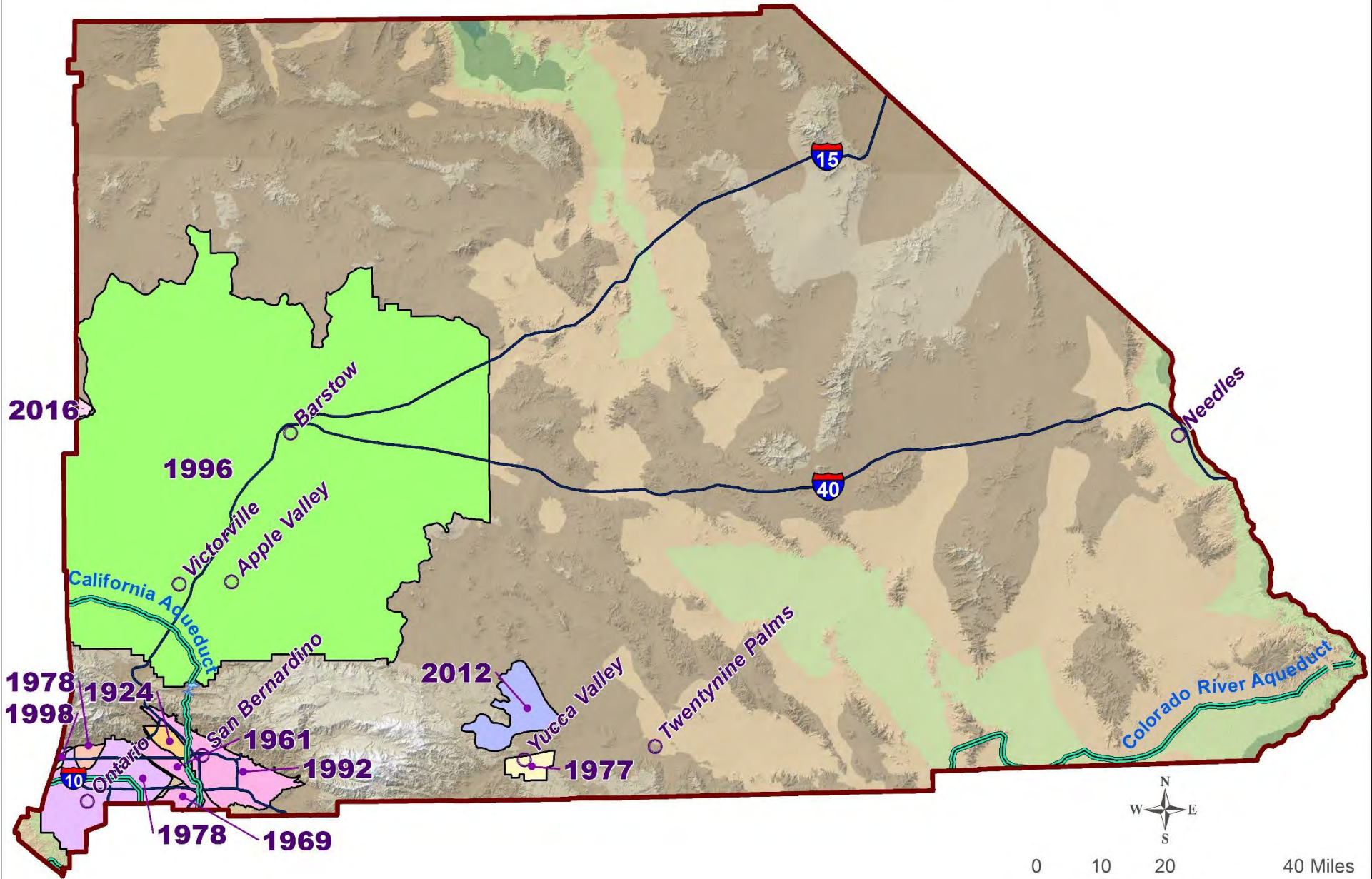


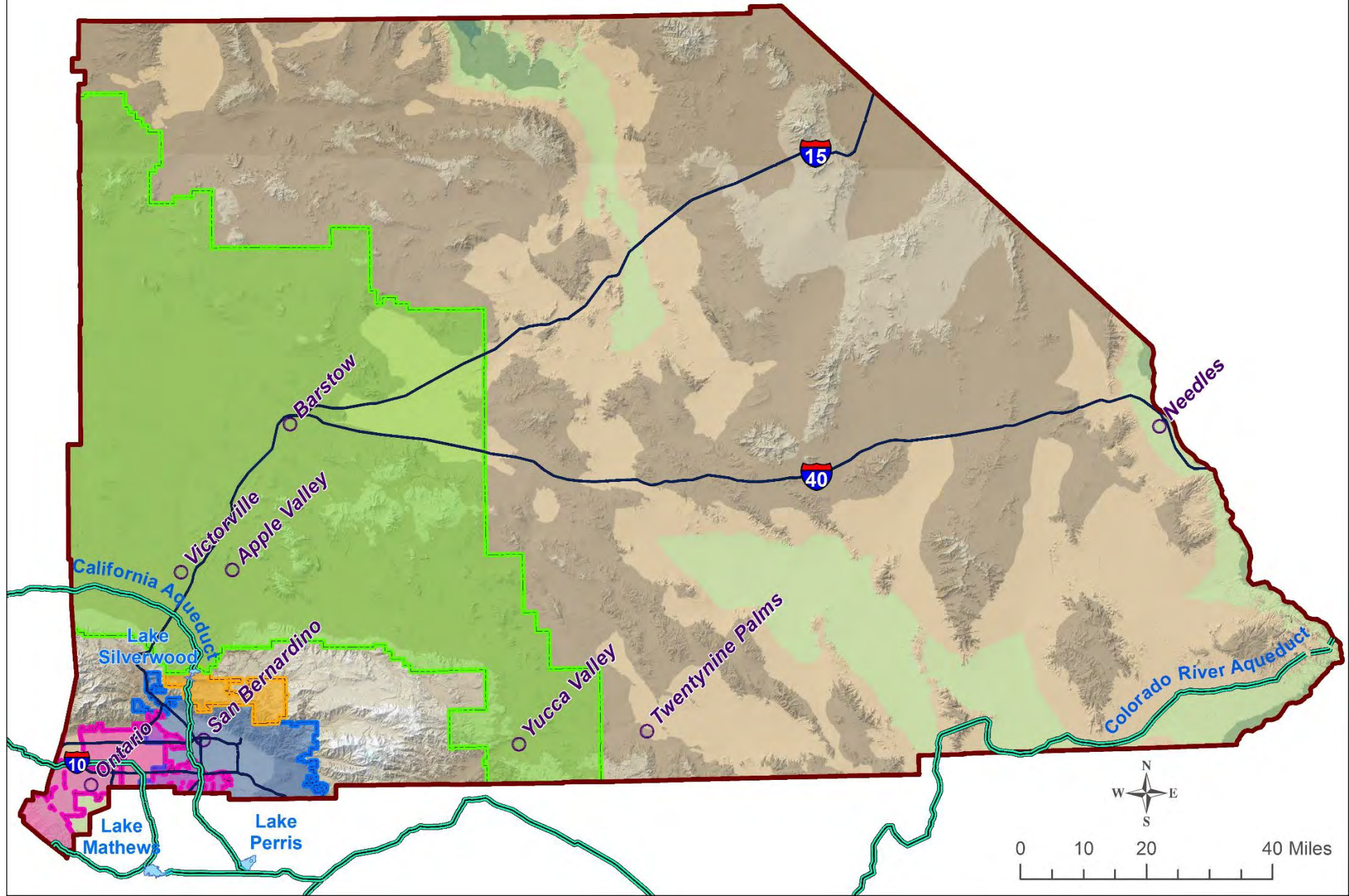
# Population (2010)



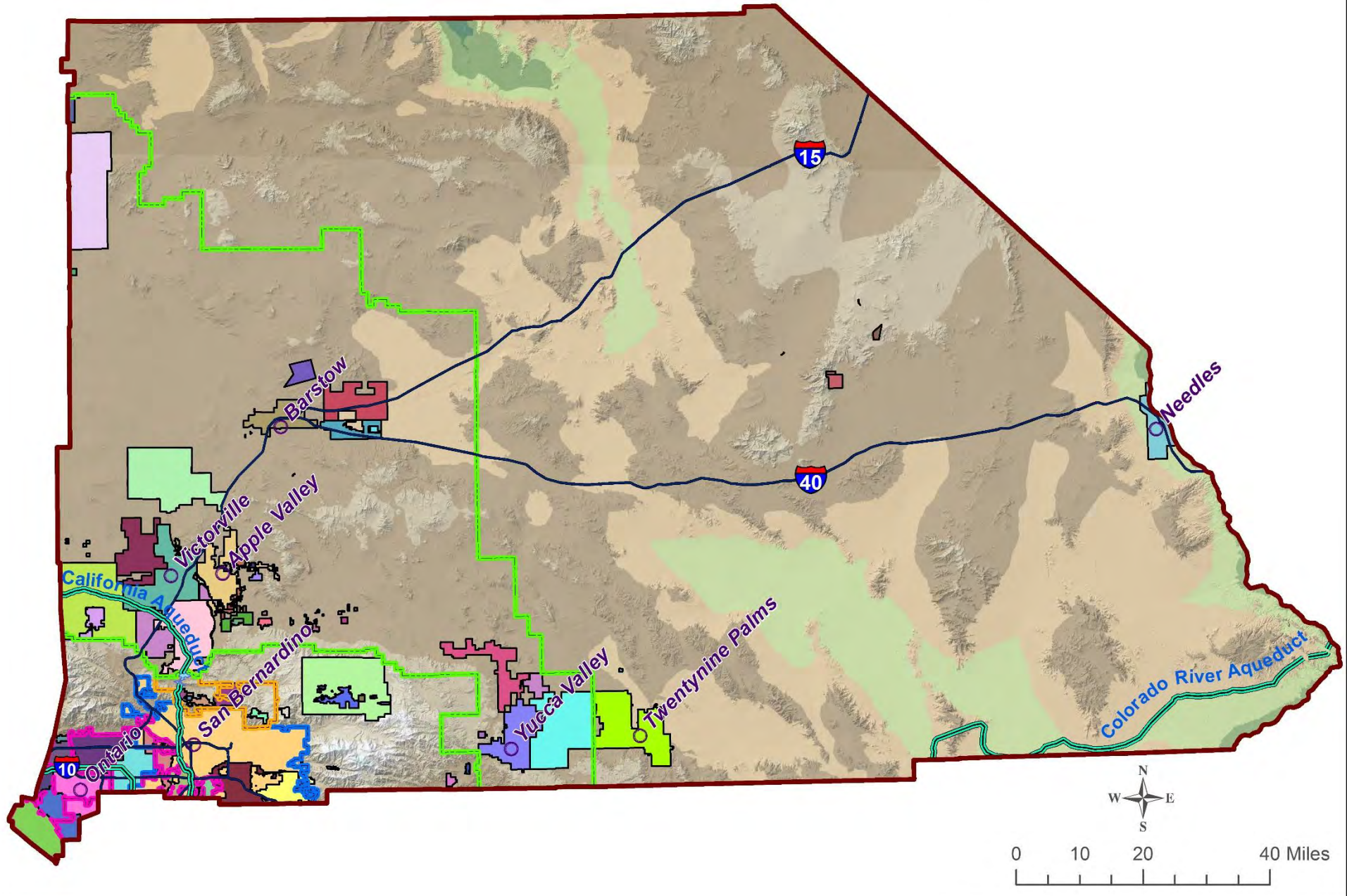
# Adjudicated Areas (1924 to 2018)



# Water Wholesalers

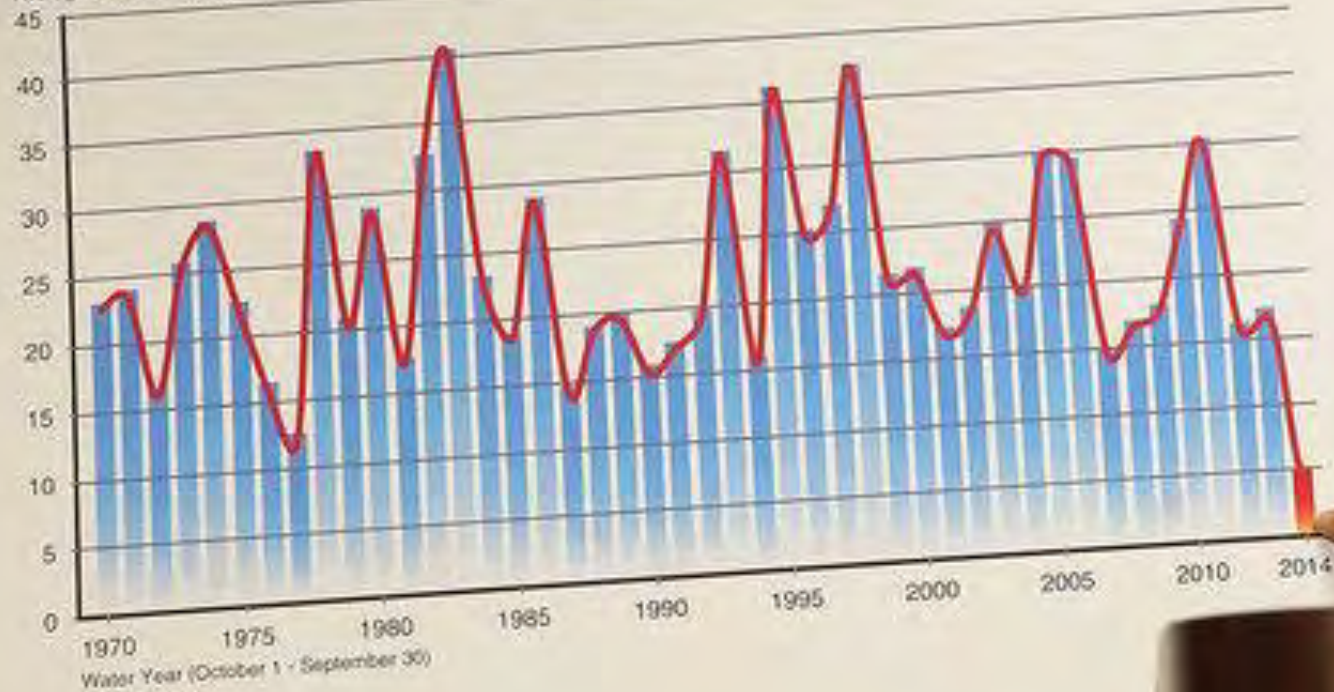


# Water Purveyors (154)

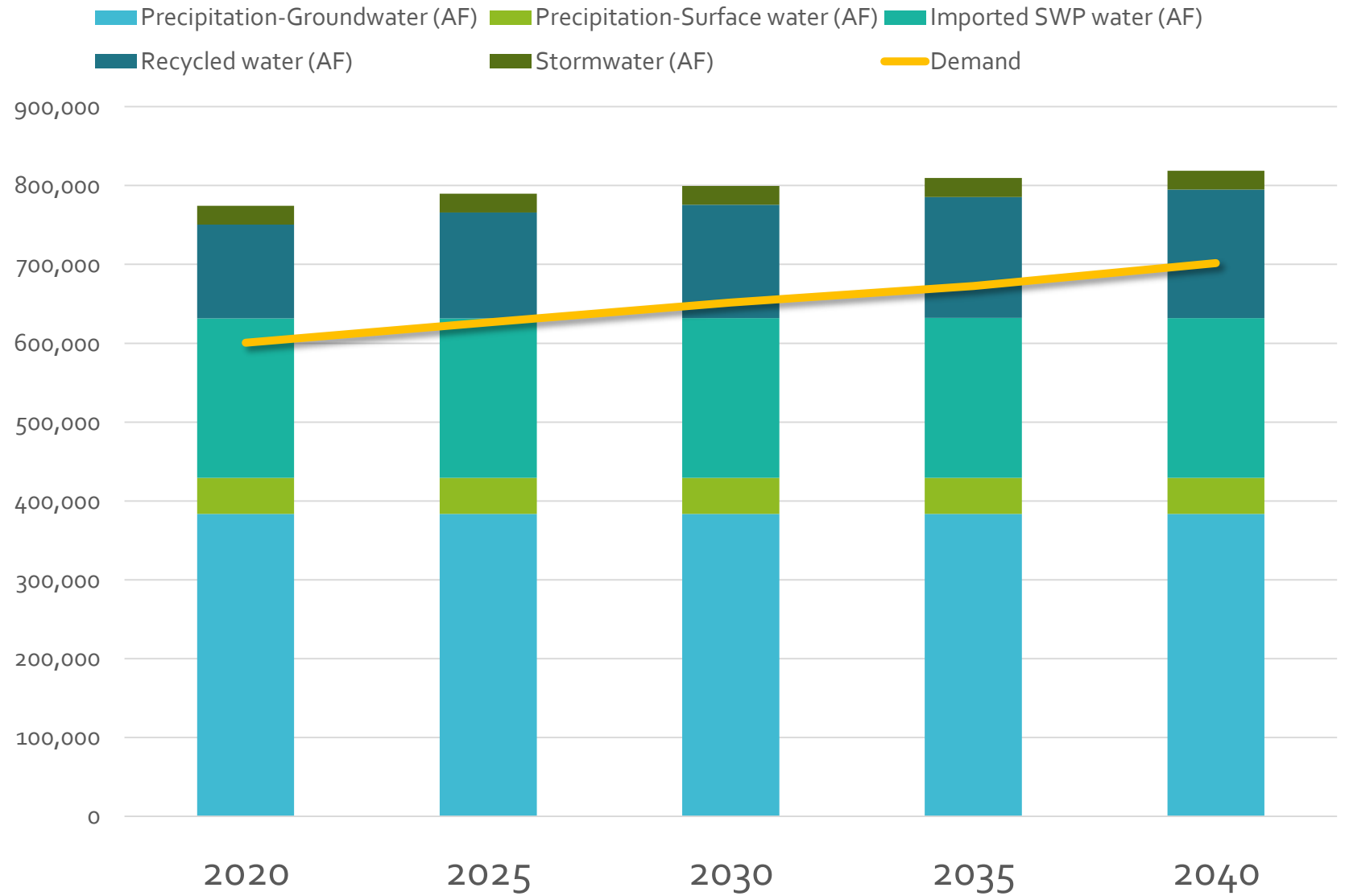


## Statewide Average Precipitation - by water year

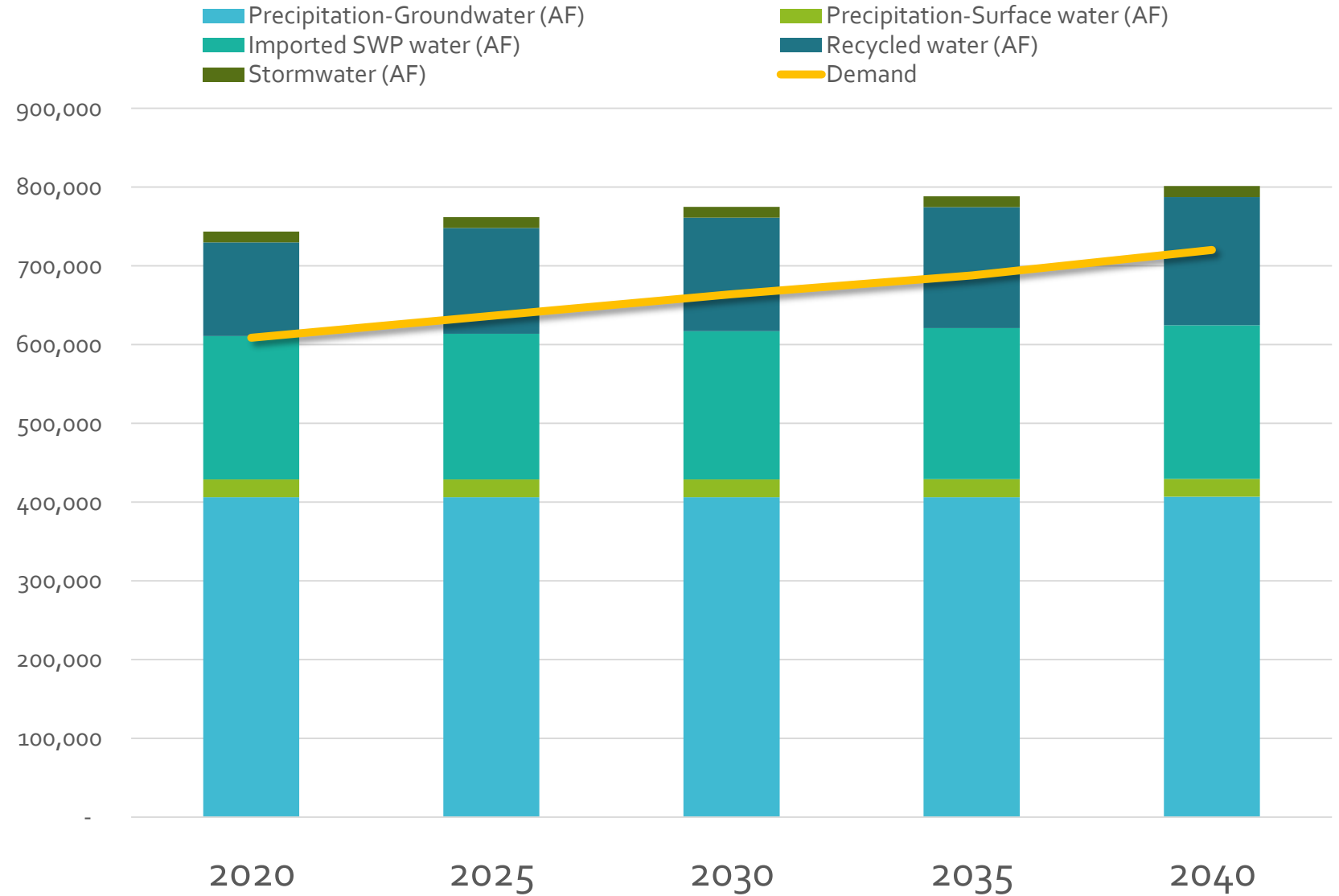
Average Precipitation (inches)



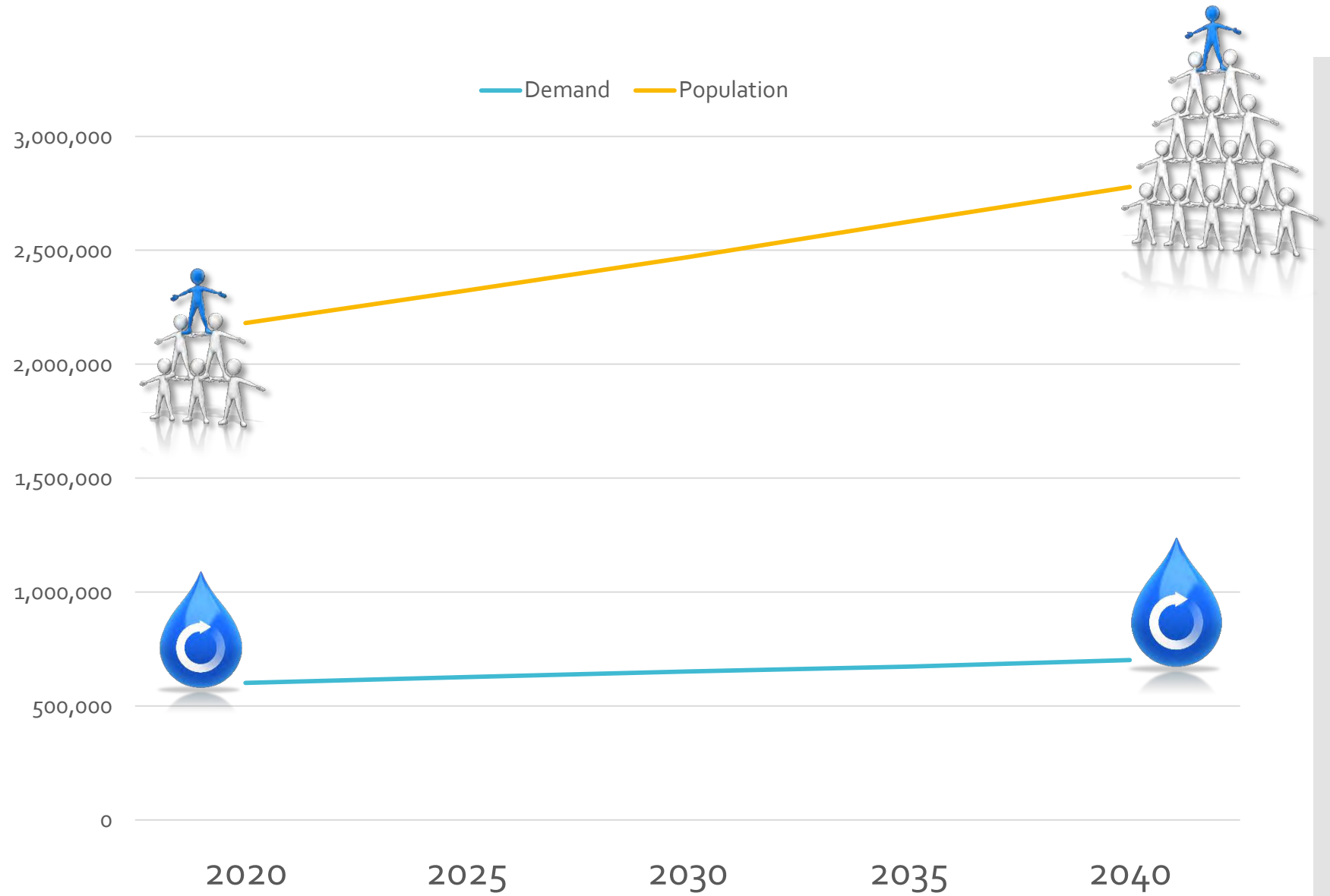
# Water Budget Normal (Average)



# Water Budget Drought



# Water Demand and Population







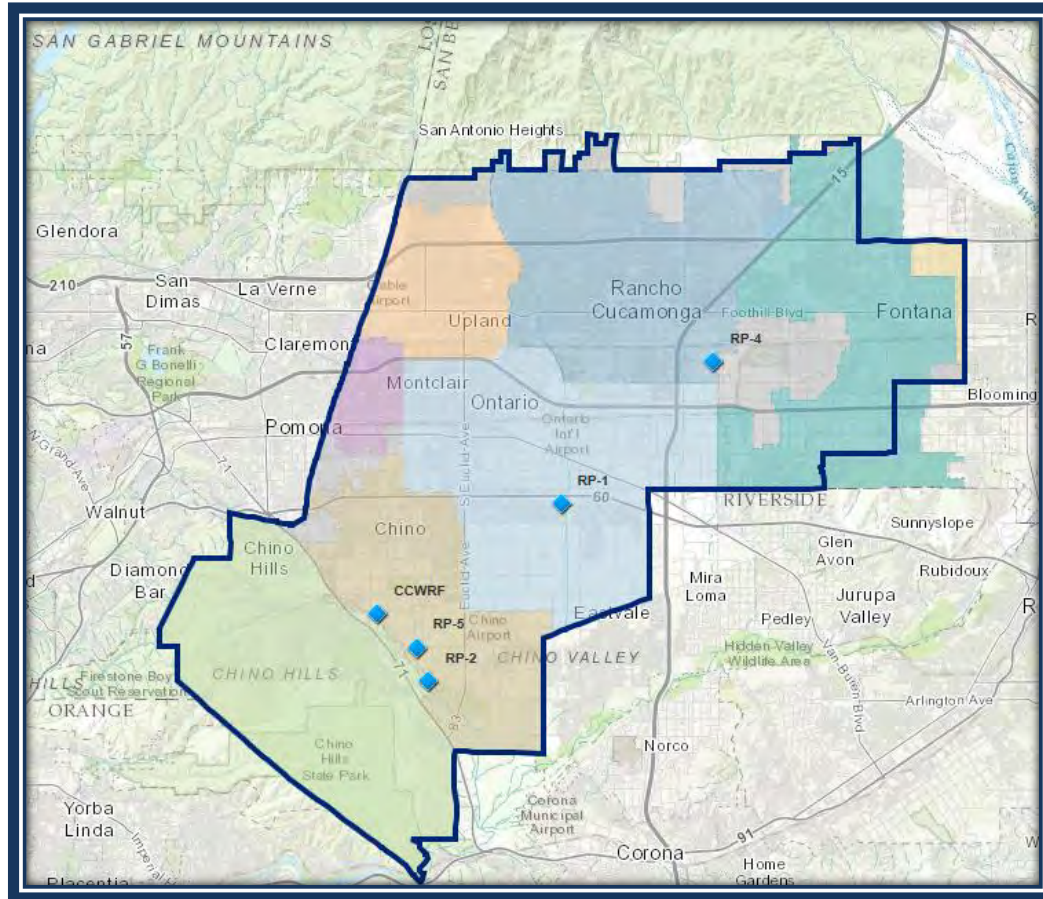
# Inland Empire Utilities Agency

## Recycled Water System

Halla Razak  
General Manager

August 10, 2018

# About IEUA...



- Located in the southwestern portion of San Bernardino County
- 875,000 residents in our service area
- 242 – square miles
- Contracting and retail agencies:
  - City of Chino
  - City of Chino Hills
  - Cucamonga Valley Water District
  - City of Fontana
  - City of Montclair
  - City of Ontario
  - City of Upland
  - Fontana Water Company
  - Monte Vista Water District

# Regional Water Recycling Plants



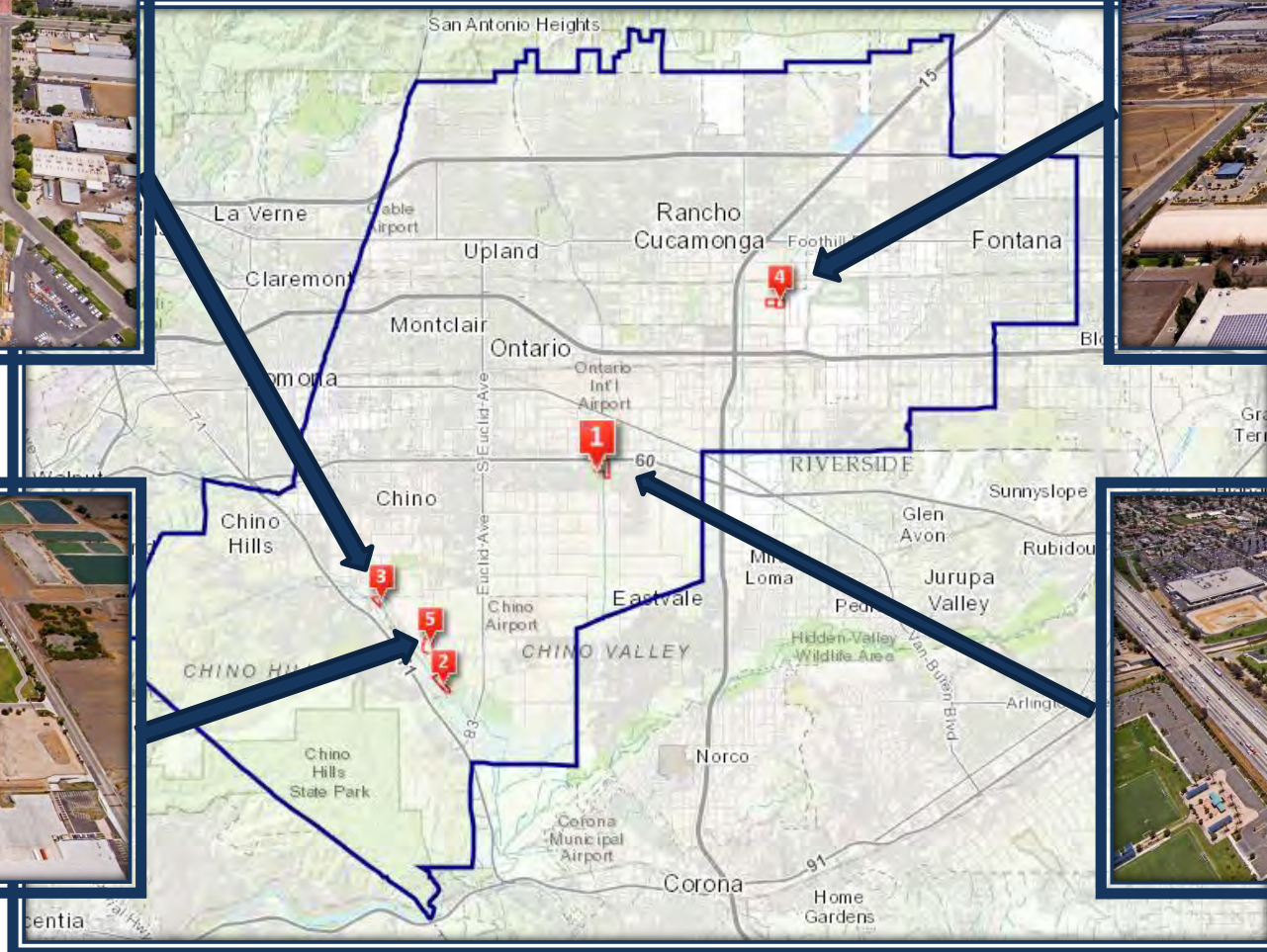
**CCWRF**



**RP-4**



**RP-5**

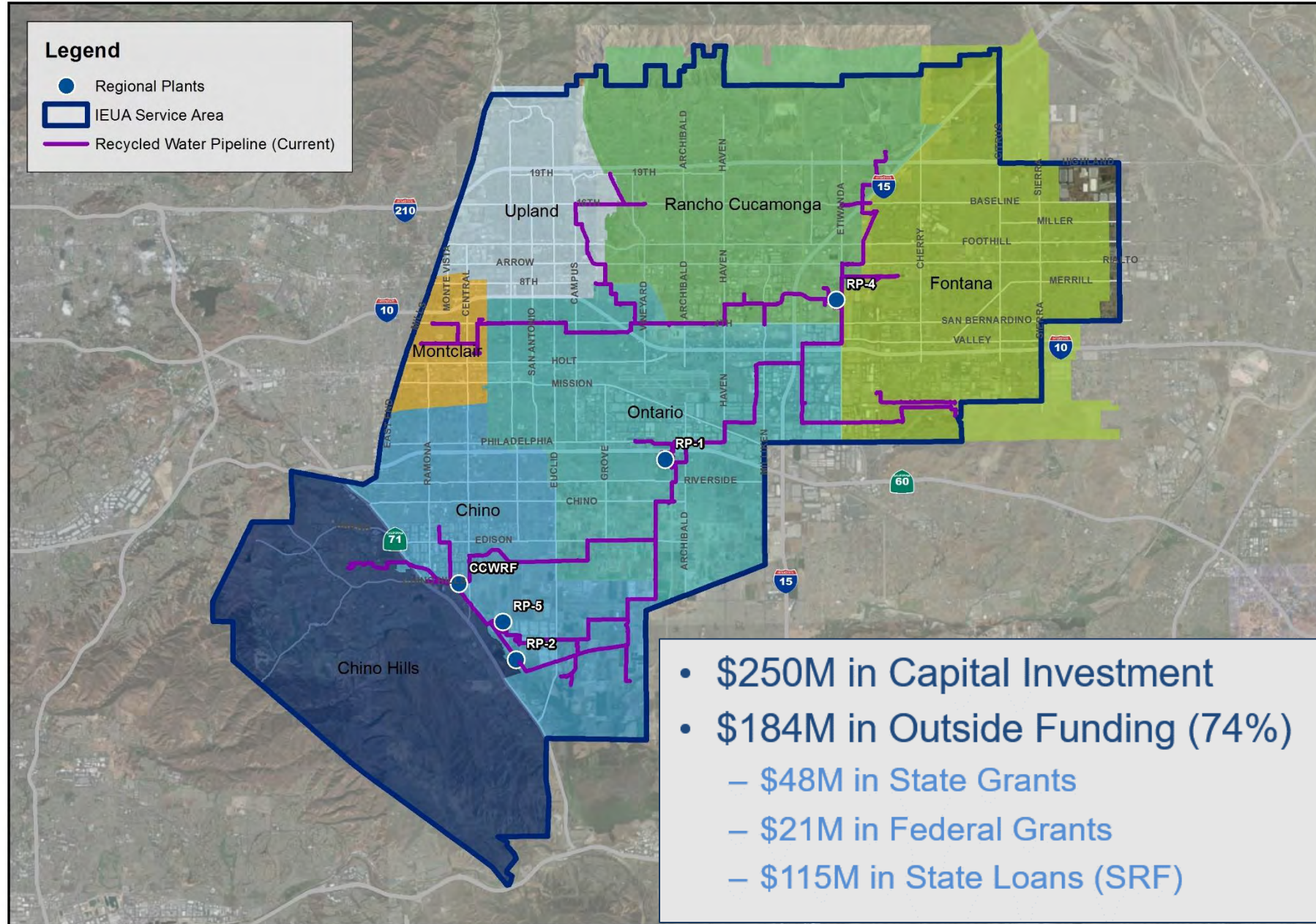


**RP-1**

# Recycled Water System (Current)

## Legend

- Regional Plants
- IEUA Service Area
- Recycled Water Pipeline (Current)



- \$250M in Capital Investment
- \$184M in Outside Funding (74%)
  - \$48M in State Grants
  - \$21M in Federal Grants
  - \$115M in State Loans (SRF)

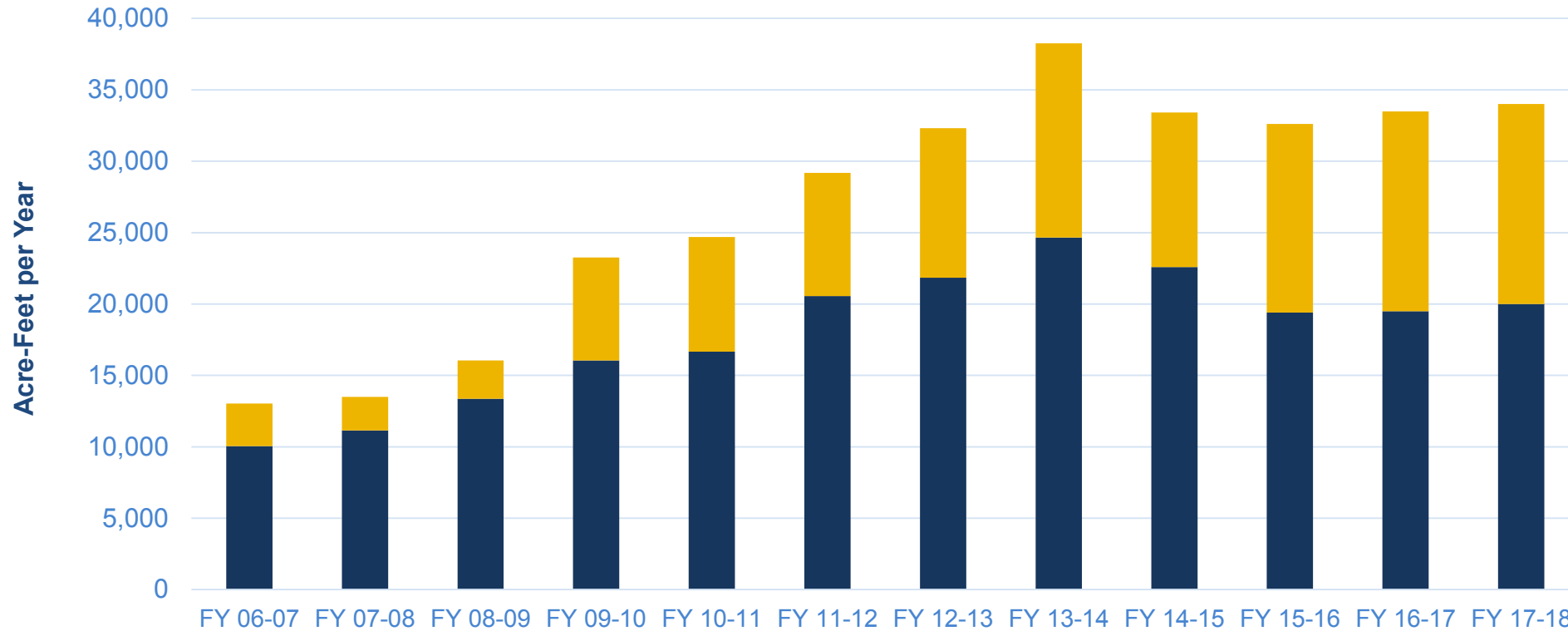
# Recycled Water

*Not impacted by climate.*

- Highly treated recycled water is the only new major source of water available to meet southern California's growing water demand.
- To date, **IEUA has more than 850 connections** to the recycled water distribution system for irrigation and industrial uses.
- Recycled water makes up roughly **17 percent** of the water supply for the region.
- **SOME OF THE APPROPRIATE USES FOR RECYCLED WATER INCLUDE:** Irrigation, landscaping, golf courses, farms, industrial cooling, parks, cemeteries, construction, recreational lakes, groundwater recharge, industrial processing, median strips.



# Recycled Water Deliveries



<b>Direct</b>	<b>10,048</b>	<b>11,153</b>	<b>13,361</b>	<b>16,057</b>	<b>16,656</b>	<b>20,556</b>	<b>21,840</b>	<b>24,659</b>	<b>22,850</b>	<b>19,397</b>	<b>19,500</b>
<b>GWR</b>	<b>2,981</b>	<b>2,340</b>	<b>2,684</b>	<b>7,208</b>	<b>8,028</b>	<b>8,634</b>	<b>10,479</b>	<b>13,593</b>	<b>10,840</b>	<b>13,222</b>	<b>14,000</b>
<b>Total</b>	<b>13,029</b>	<b>13,493</b>	<b>16,045</b>	<b>23,265</b>	<b>24,684</b>	<b>29,190</b>	<b>32,319</b>	<b>38,252</b>	<b>33,690</b>	<b>32,619</b>	<b>33,500</b>

Note: FY17-18 is based on preliminary data

# Contact Us

 – (909) 993-1600

 – [info@ieua.org](mailto:info@ieua.org)



Visit our website: [www.ieua.org](http://www.ieua.org)



[IEUAwater](https://www.facebook.com/IEUAwater)

You  [IEUAwater](https://www.youtube.com/IEUAwater)



[IEUAwater](https://twitter.com/IEUAwater)



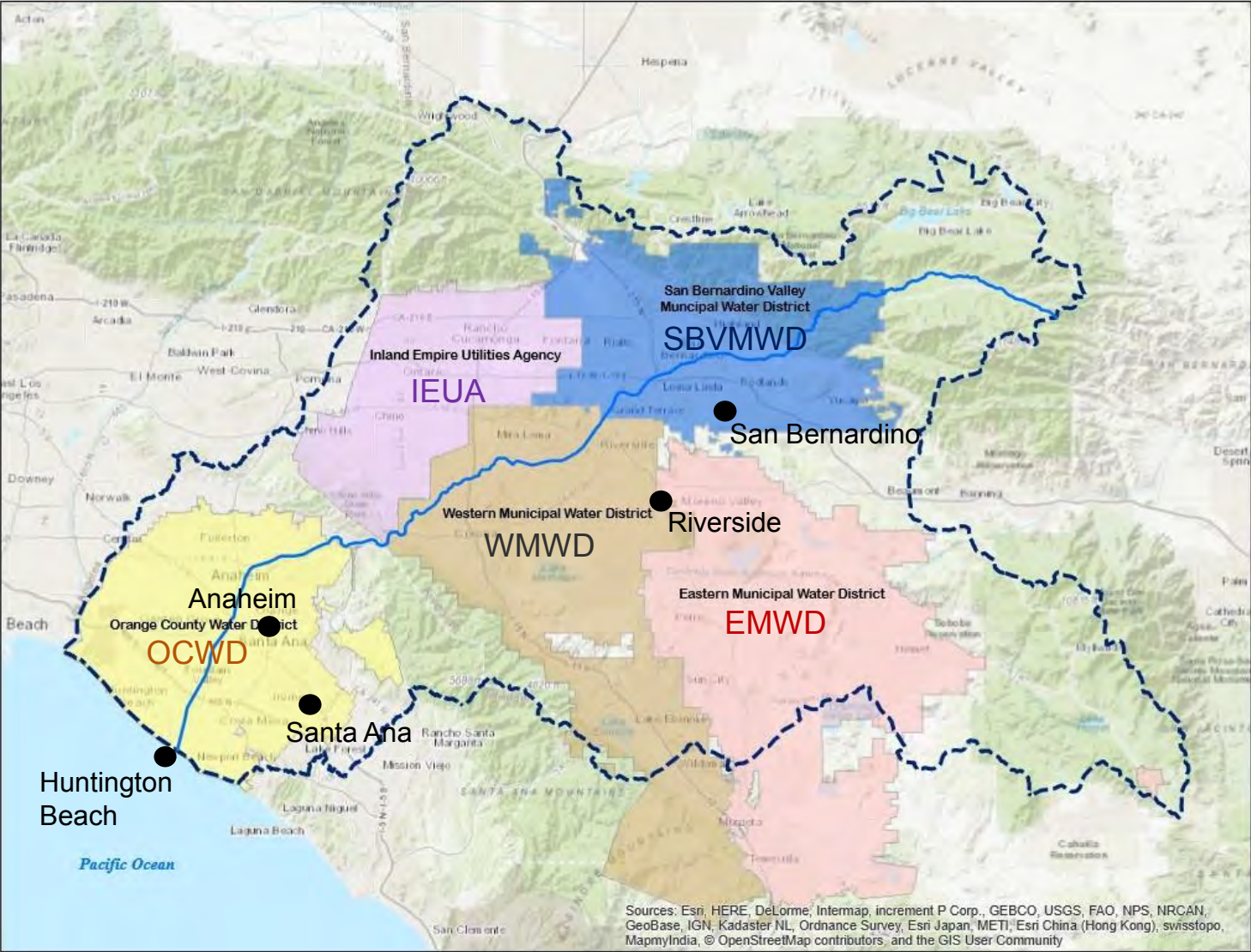
# How do we overcome threats to our water supply?

Bob Tincher

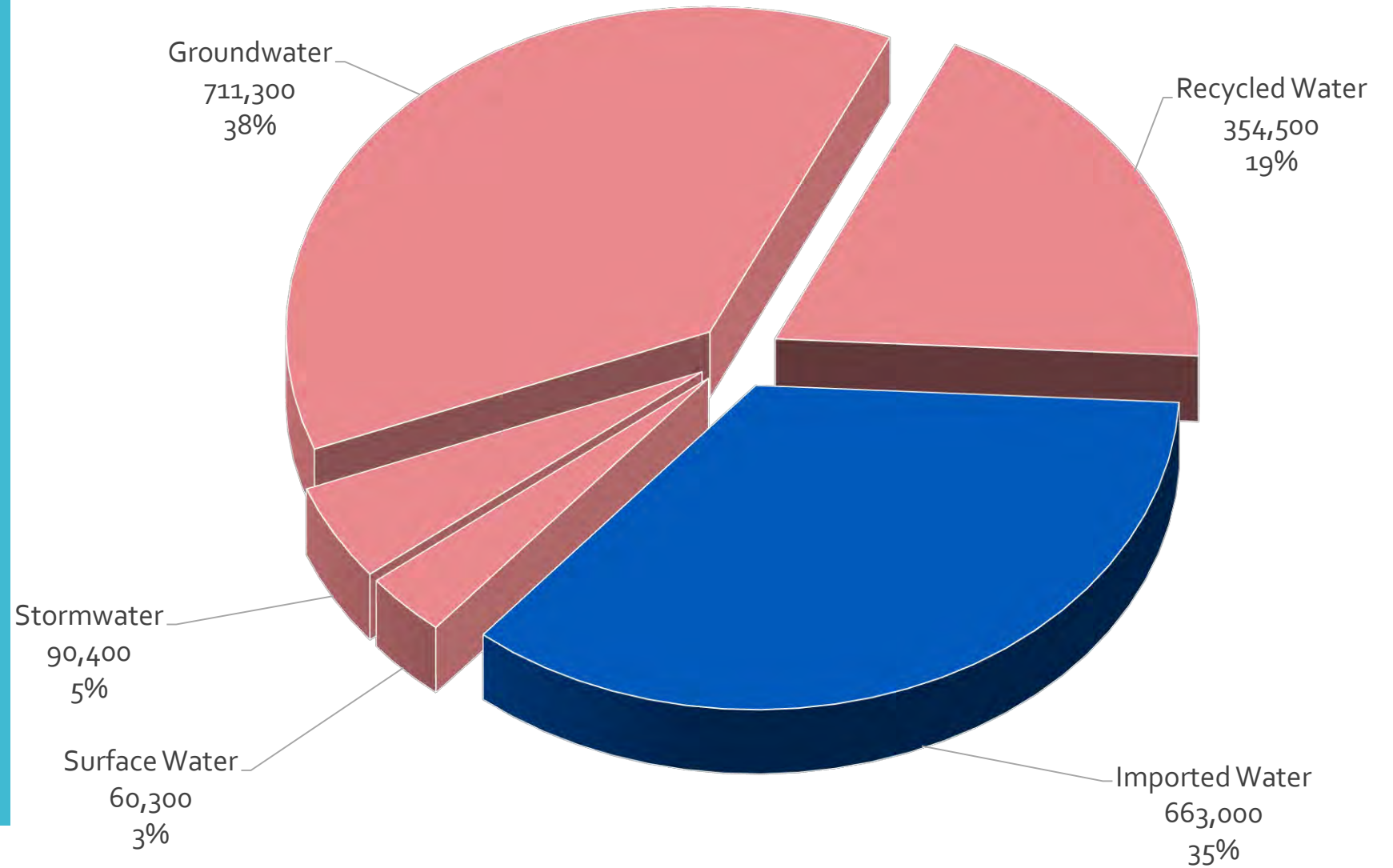
Deputy General Manager – Resources

San Bernardino Valley Municipal Water District

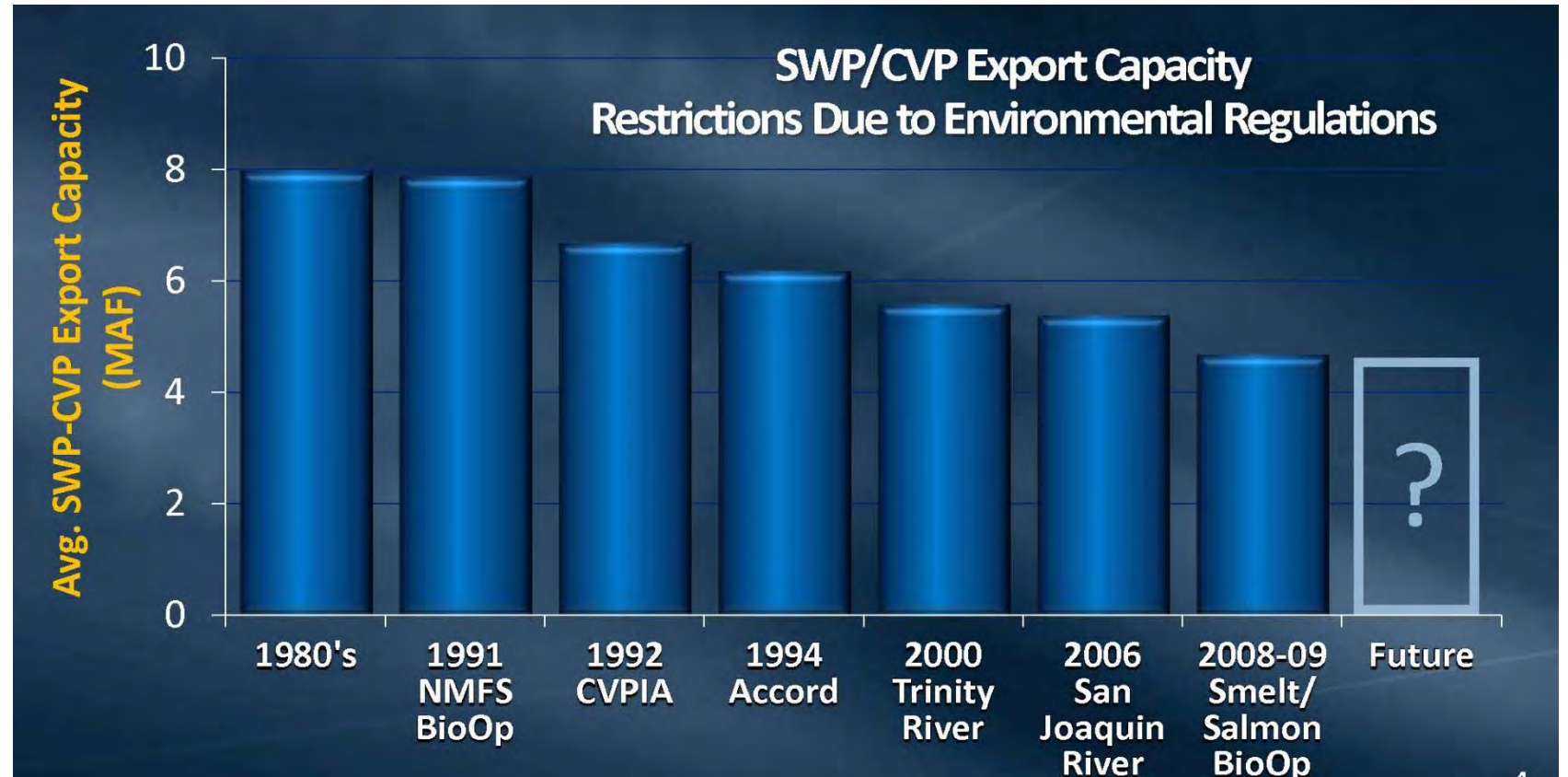
# Santa Ana River Watershed



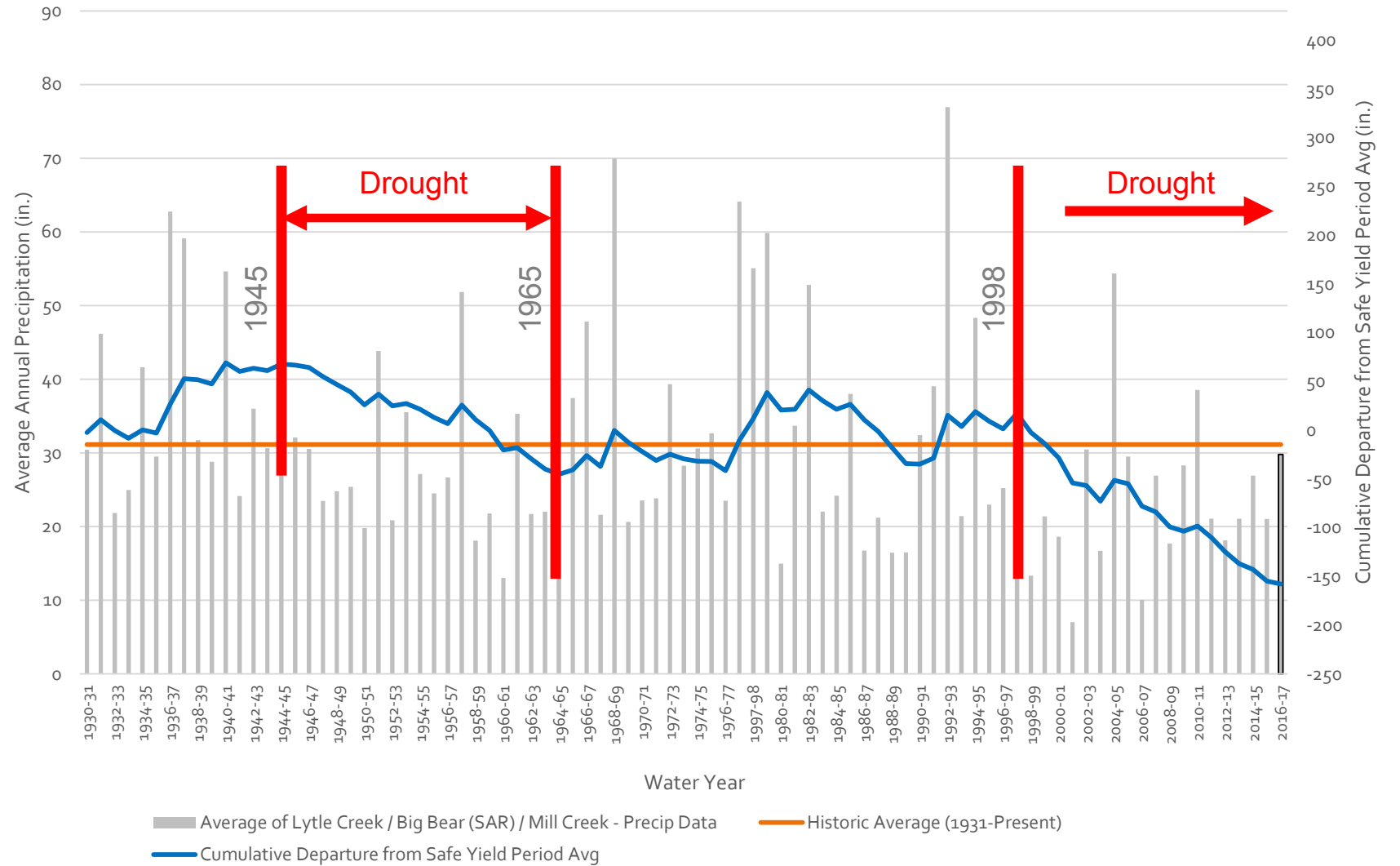
# Local Supplies Are Not Enough



# The Reliability of Imported Water is Declining



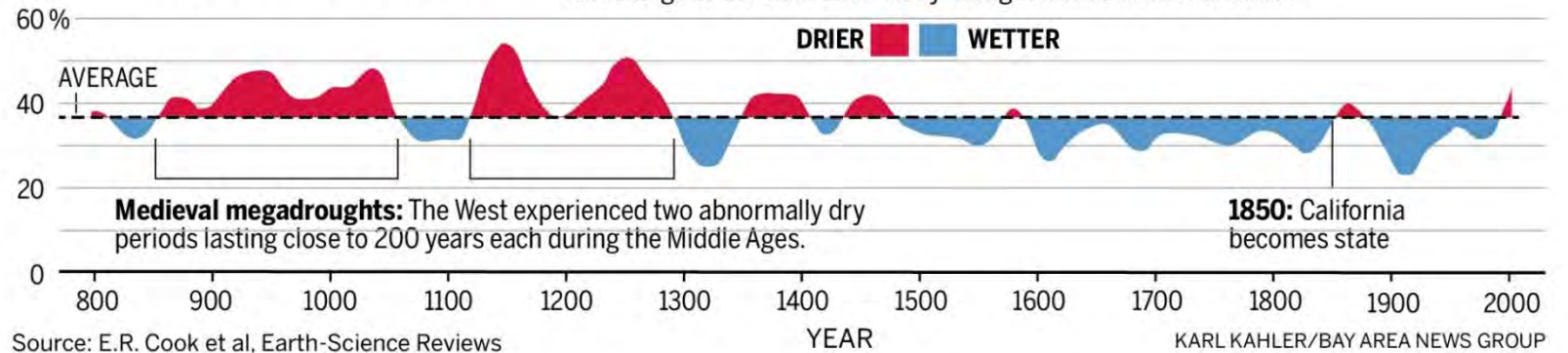
# 20 Year Droughts Are Common



# Droughts Could Last Longer...

## A 200-year drought?

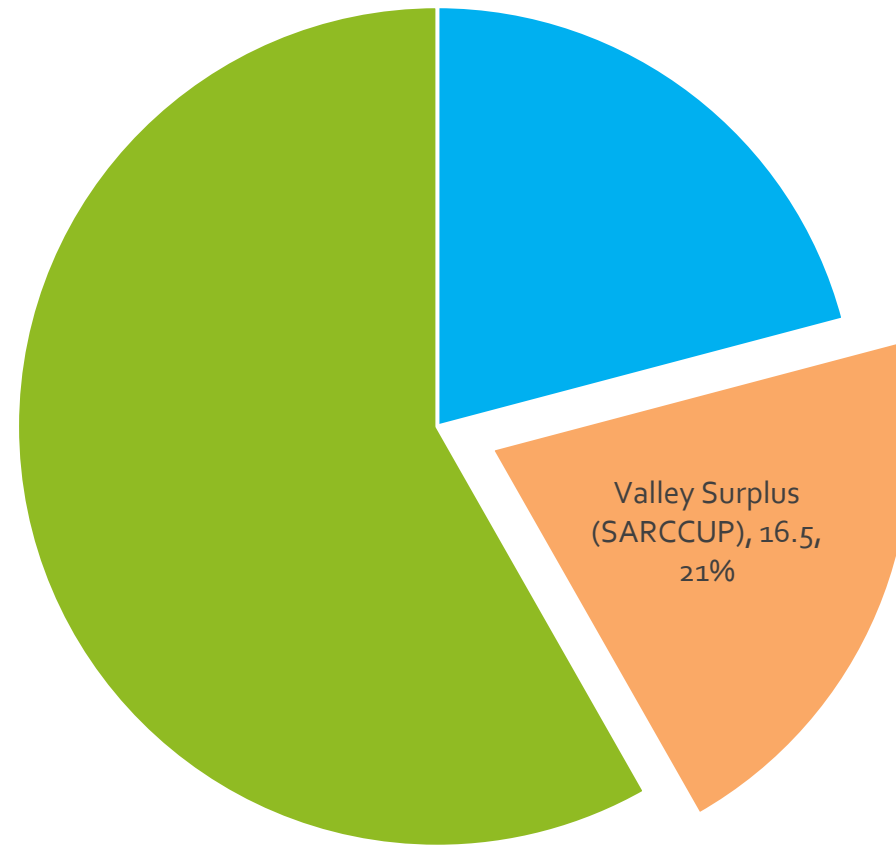
Evidence from tree rings shows that drought was historically much more widespread in the American West than now, while the 20th century was wetter than normal. Percentage of the West affected by drought from 800 A.D. to 2000:





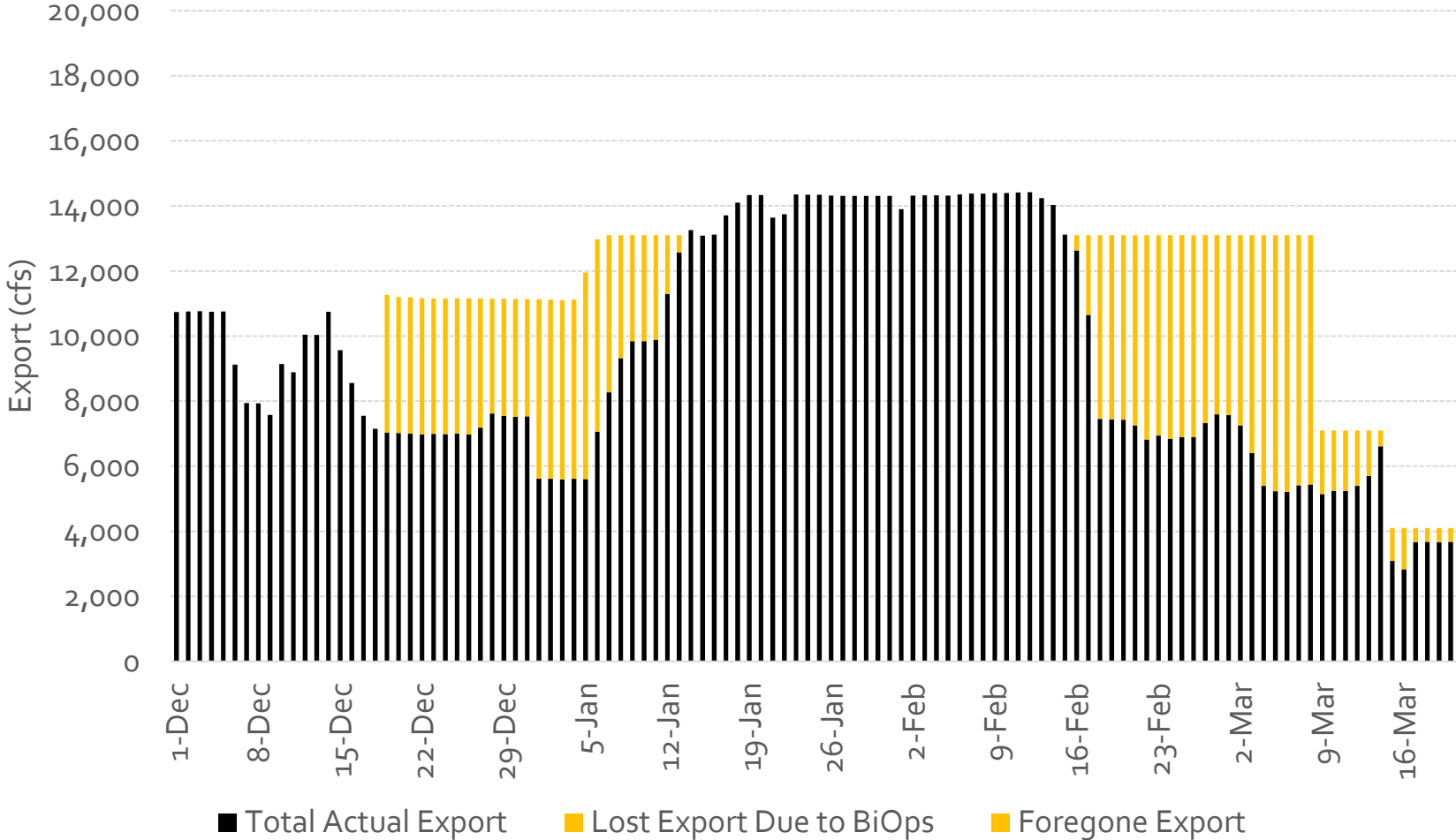
The Solution: STORAGE

SBVMWD  
Predicts  
Surplus  
Water  
in Wet Years



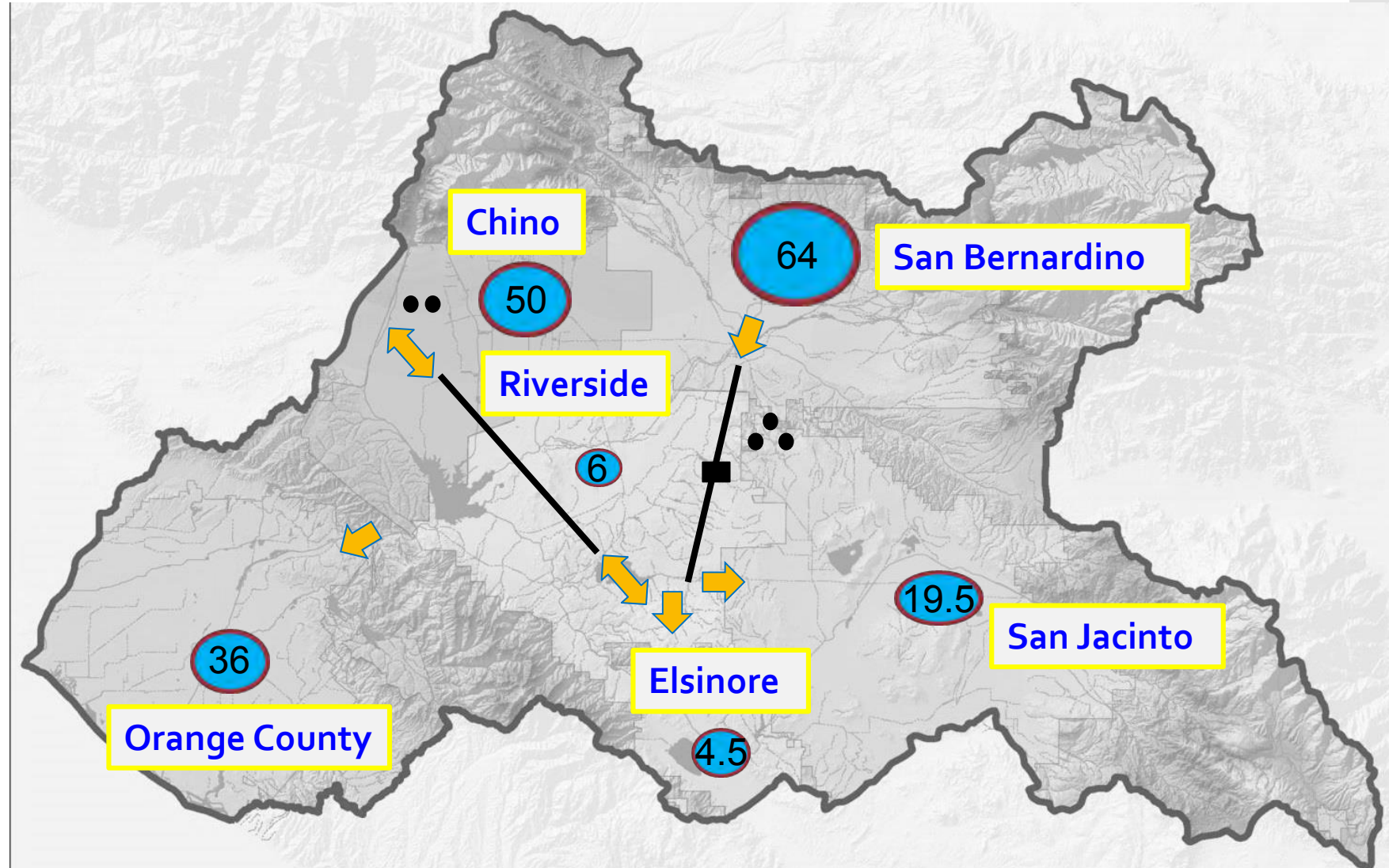


# In Wet Years, Excess Water Flows Under the Golden Gate Bridge



# Santa Ana River Conservation and Conjunctive Use Program (SARCCUP) Water Bank

- ✓ Local Storage
- ✓ Six Basins
- ✓ 180,000 AF
- ✓ 60,000 AFY for 3 years



Thank you



[rshaw@wmwd.com](mailto:rshaw@wmwd.com)

[bobt@sbumwd.com](mailto:bobt@sbumwd.com)

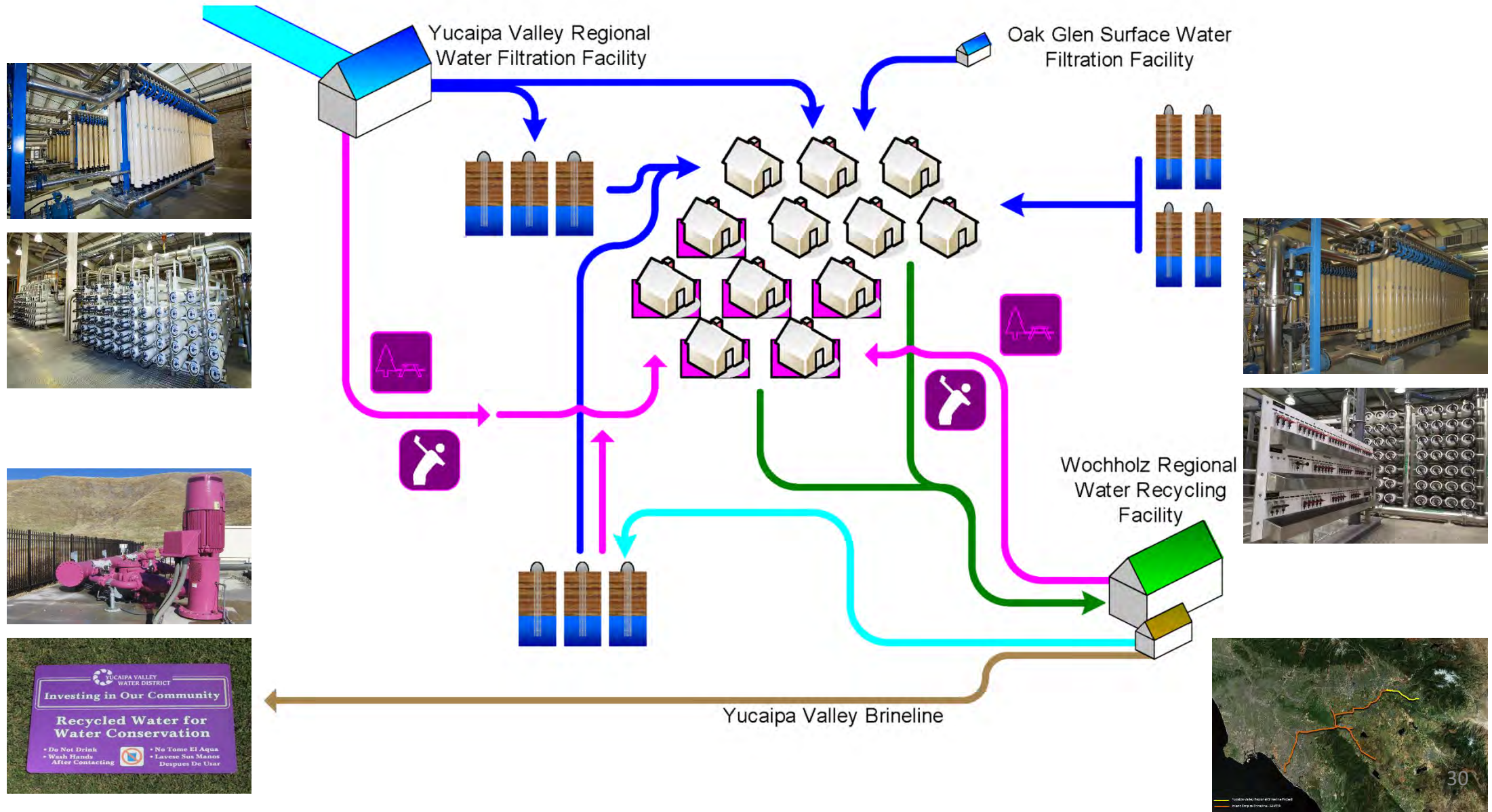


City of Yucalpa

City of Calimesa



# Sustainable and Integrated Infrastructure Concepts



Drinking Water  
Meter Boxes

Recycled Water  
Meter Boxes



