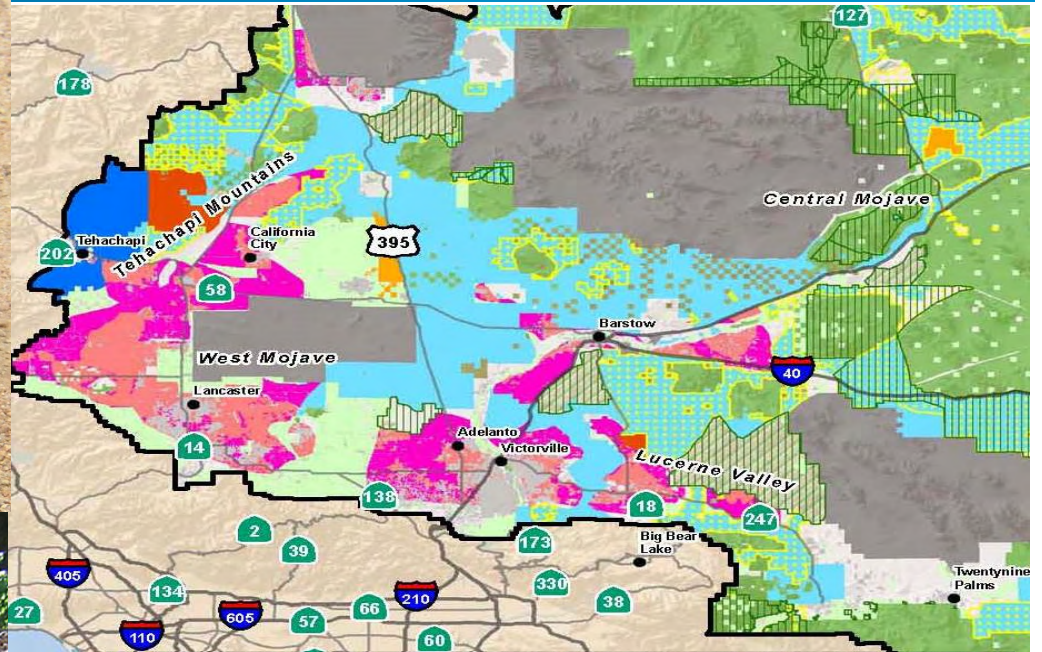


San Bernardino Associated Governments

**Countywide Habitat
Preservation/Conservation
Framework Study**



Conservation Planning



INTRODUCTION and PURPOSE

- **SANBAG lead on Countywide Preservation/Conservation Framework Study**
- **SANBAG contracted with Dudek**
- **Emphasis of Scope of Work:**
 - Exploring more comprehensive approaches to conservation – is project-by-project best?
 - Desired outcome – a framework and principles that define path forward
 - Scope does not assume specific mechanisms
 - Goal is a sustainable environment that can support expected population and economic growth

INTRODUCTION and PURPOSE

- **Dudek to conduct Study:**
 - **Documentation of Existing and Past Efforts**
 - **Identification of Data Gaps**
 - **Evaluate potential areas for conservation efforts**
 - **Subarea evaluations**
 - **Create conservation/preservation principles**
 - **Provide next steps analysis**

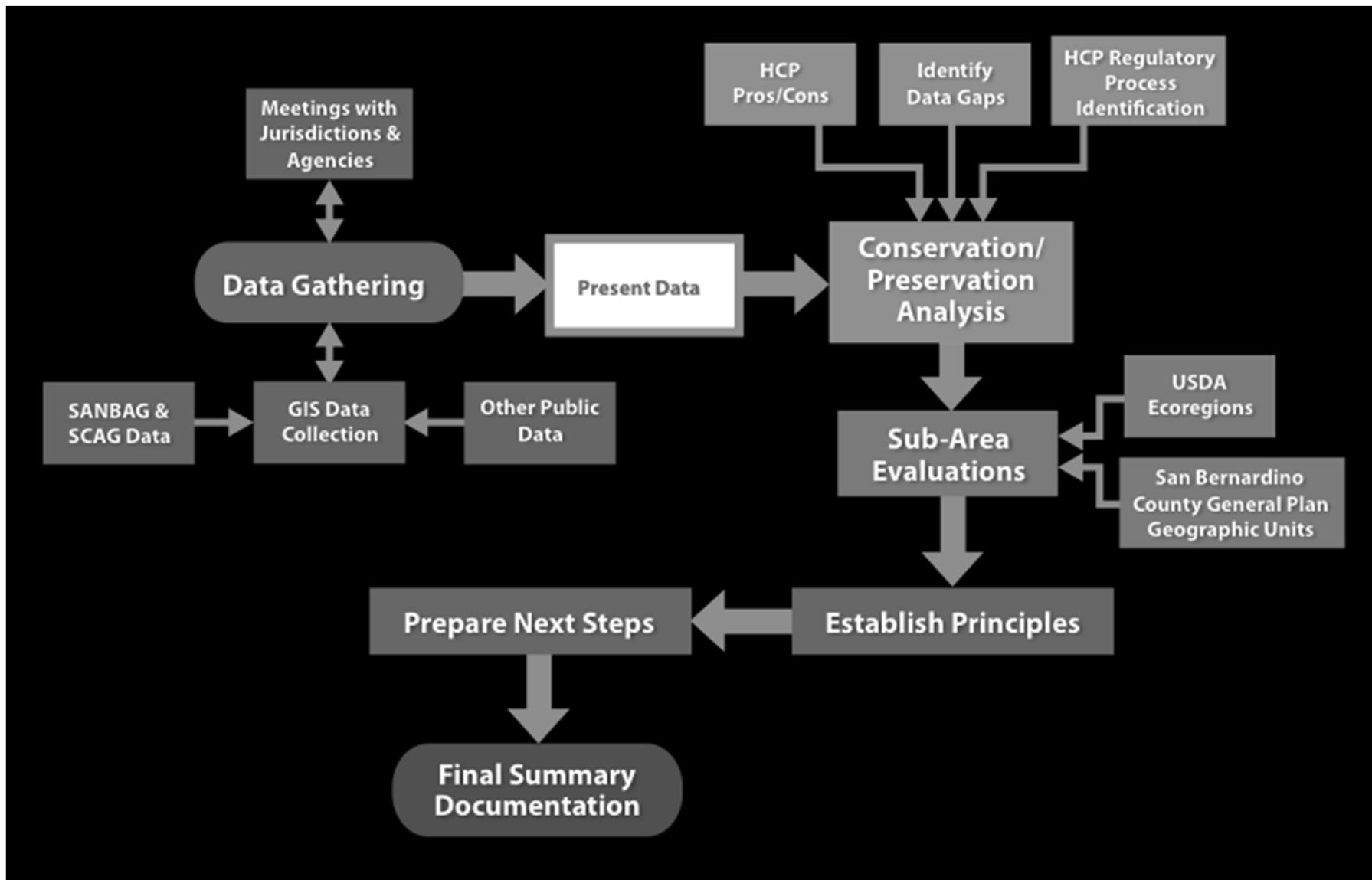
WHAT IT IS; WHAT ITS NOT

- **WHAT THIS STUDY INCLUDES:**
 - Documentation of existing conservation efforts
 - Unbiased evaluation of existing data
 - Data gap analysis
 - Evaluation of listed species demographics
 - Identification of potential sub areas
- **WHAT THIS STUDY DOES NOT INCLUDE:**
 - Creating a Habitat Conservation Plan
 - Providing analysis of Covered Activities
 - Identifying lands to be set aside for conservation/preservation
 - Evaluating each city, town or agency for lands to be set aside

EXPECTATIONS

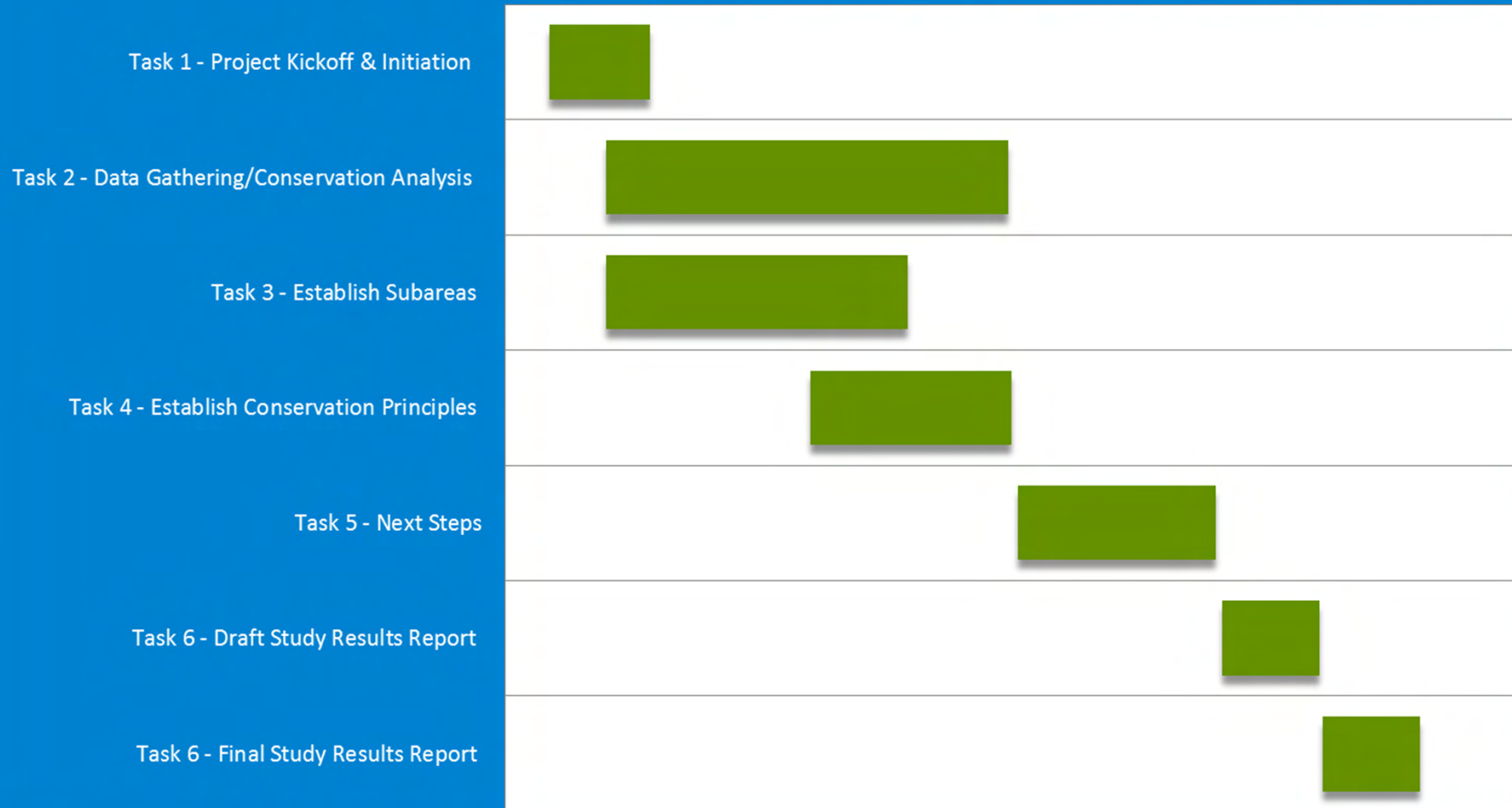
- Provide feedback to Dudek and SANBAG Team
- Assist with data gathering requests
- Review and provide feedback on documents
- Ambassadors for the Study

ANTICIPATED WORK FLOW



PROPOSED SCHEDULE

Apr-14 May-14 Jun-14 Jul-14 Aug-14 Sep-14 Oct-14 Nov-14 Dec-14 Jan-15



DISCUSSION - QUESTIONNAIRE

Your Opinions on Conservation Planning

- Things that will get better with Conservation Planning
- Things that will be challenging with Conservation Planning
- Things you want from this Study
- Tell us what initiatives you are involved with that are related to Conservation Planning

NEXT STEPS

Data Gathering

- Dudek to gather GIS data from SCAG, LAFCO, Museum and others
- SANBAG and Dudek to set up meetings with Agencies and Jurisdictions
- Dudek to evaluate past and current efforts
- Dudek to provide summary to Environment Element Group
- Dudek and SANBAG to prepare Principles for Environmental Element Group to review and provide guidance on drafting Principles

WRAP UP

- **Study will recommend a framework for Conservation Planning in County**
- **Expectations of Environment Element Group – participate in data gathering, provide feedback and guidance on documents, ambassadors for Study**
- **Leave Questionnaire behind – will help frame current conditions and efforts for Conservation Planning**
- **Contact: Stephanie Standerfer – ssanderfer@dudek.com**

Questions?

Questions